

AP1069

Leader in Biomolecular Solutions for Life Science



# Phospho-IκBα-S36 Rabbit pAb

Catalog No.: AP1069

2 Publications

## Basic Information

### Observed MW

45kDa

### Calculated MW

36kDa

### Category

Polyclonal Antibody

### Applications

WB, ELISA

### Cross-Reactivity

Human, Mouse, Rat

## Background

This gene encodes a member of the NF-kappa-B inhibitor family, which contain multiple ankrin repeat domains. The encoded protein interacts with REL dimers to inhibit NF-kappa-B/REL complexes which are involved in inflammatory responses. The encoded protein moves between the cytoplasm and the nucleus via a nuclear localization signal and CRM1-mediated nuclear export. Mutations in this gene have been found in ectodermal dysplasia anhidrotic with T-cell immunodeficiency autosomal dominant disease.

## Recommended Dilutions

**WB** 1:500 - 1:2000

**ELISA** Recommended starting concentration is 1 µg/mL. Please optimize the concentration based on your specific assay requirements.

## Immunogen Information

### Gene ID

4792

### Swiss Prot

P25963

### Immunogen

Synthetic peptide. This information is considered to be commercially sensitive.

### Synonyms

IKBA; MAD-3; NFKBI; EDAID2; Phospho-IκBα-S36

## Contact

 [www.abclonal.com](http://www.abclonal.com)

## Product Information

### Source

Rabbit

### Isotype

IgG

### Purification

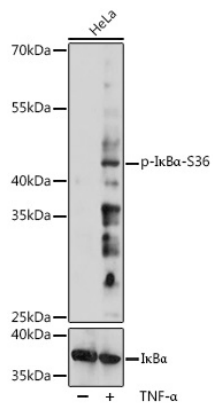
Affinity purification

### Storage

Store at -20°C. Avoid freeze / thaw cycles.

Buffer: PBS containing 50% glycerol, preserved with proclin300 or sodium azide (as specified on the Certificate of Analysis), pH 7.3.

## Validation Data



Western blot analysis of lysates from HeLa cells, using Phospho-IκBα-S36 Rabbit pAb (A11397). HeLa cells were treated with TNF-α (20 ng/mL) at 37°C for 30 minutes. Secondary antibody: HRP-conjugated Goat anti-Rabbit IgG (H+L) (AS014) at 1:10000 dilution.

Lysates/proteins: 25μg per lane.

Blocking buffer: 3% BSA.

Detection: ECL Basic Kit (RM00020).

Exposure time: 30s.