

AP1117

Leader in Biomolecular Solutions for Life Science



# Phospho-TSC2-S1387 Rabbit pAb

Catalog No.: AP1117

1 Publications

## Basic Information

### Observed MW

200kDa

### Calculated MW

201kDa

### Category

Polyclonal Antibody

### Applications

WB,ELISA

### Cross-Reactivity

Human,Mouse,Rat

## Background

This gene is a tumor suppressor gene that encodes the growth inhibitory protein tuberlin. Tuberlin interacts with hamartin to form the TSC protein complex which functions in the control of cell growth. This TSC protein complex negatively regulates mammalian target of rapamycin complex 1 (mTORC1) signaling which is a major regulator of anabolic cell growth. Mutations in this gene have been associated with tuberous sclerosis and lymphangioleiomyomatosis.

## Recommended Dilutions

**WB** 1:500 - 1:2000

**ELISA** Recommended starting concentration is 1 µg/mL. Please optimize the concentration based on your specific assay requirements.

## Immunogen Information

### Gene ID

7249

### Swiss Prot

P49815

### Immunogen

Synthetic peptide. This information is considered to be commercially sensitive.

### Synonyms

LAM; TSC4; PPP1R160; Phospho-TSC2-S1387

## Contact

 [www.abclonal.com](http://www.abclonal.com)

## Product Information

### Source

Rabbit

### Isotype

IgG

### Purification

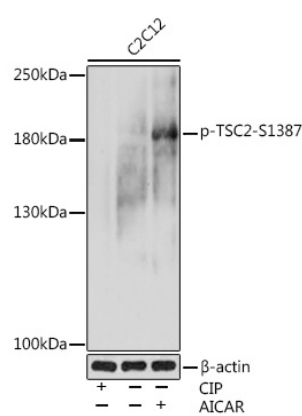
Affinity purification

### Storage

Store at -20°C. Avoid freeze / thaw cycles.

Buffer: PBS with 0.01% thimerosal, 50% glycerol, pH7.3.

# Validation Data



Western blot analysis of lysates from C2C12 cells, using Phospho-TSC2-S1387 Rabbit pAb (AP1117) at 1:1000 dilution. C2C12 cells were treated with CIP(20uL/400ul) at 37°C for 1 hour. C2C12 cells were treated with AICAR (0.5 mM) at 37°C for 30 minutes after serum-starvation overnight. Secondary antibody: HRP-conjugated Goat anti-Rabbit IgG (H+L) (AS014) at 1:10000 dilution. Lysates/proteins: 25µg per lane. Blocking buffer: 3% BSA. Detection: ECL Basic Kit (RM00020). Exposure time: 60s.