

AP1158

Leader in Biomolecular Solutions for Life Science



Phospho-PAK1/2/3-S144/S141/S139 Rabbit mAb

Catalog No.: AP1158

Recombinant

1 Publications

Basic Information

Observed MW

65kDa

Calculated MW

65kDa

Category

SMab Recombinant Monoclonal
Antibody

Applications

WB,ELISA

Cross-Reactivity

Human,Mouse,Rat

CloneNo number

ARC1698

Background

This gene encodes a family member of serine/threonine p21-activating kinases, known as PAK proteins. These proteins are critical effectors that link RhoGTPases to cytoskeleton reorganization and nuclear signaling, and they serve as targets for the small GTP binding proteins Cdc42 and Rac. This specific family member regulates cell motility and morphology. Alternatively spliced transcript variants encoding different isoforms have been found for this gene. [provided by RefSeq, Apr 2010]

Recommended Dilutions

WB 1:500 - 1:1000

ELISA Recommended starting concentration is 1 µg/mL. Please optimize the concentration based on your specific assay requirements.

Immunogen Information

Gene ID

5058/5062/5063

Swiss Prot

Q13153/Q13177/O75914

Immunogen

Synthetic peptide. This information is considered to be commercially sensitive.

Synonyms

PAKalpha; Phospho-PAK1/2/3-S144/S141/S139

Contact

 www.abclonal.com

Product Information

Source

Rabbit

Isotype

IgG

Purification

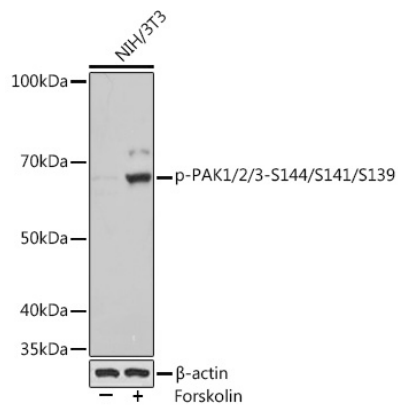
Affinity purification

Storage

Store at -20°C. Avoid freeze / thaw cycles.

Buffer: PBS with 0.02% sodium azide,0.05% BSA,50% glycerol,pH7.3.

Validation Data



Western blot analysis of various lysates using Phospho-PAK1/2/3-S144/S141/S139 Rabbit mAb (AP1158) at 1:1000 dilution. NIH/3T3 cells were treated with Forskolin (30 μ M) at 37°C for 30 minutes after serum-starvation overnight
Secondary antibody: HRP-conjugated Goat anti-Rabbit IgG (H+L) (AS014) at 1:10000 dilution.

Lysates/proteins: 25 μ g per lane.

Blocking buffer: 3% BSA.

Detection: ECL Basic Kit (RM00020).

Exposure time: 1s.