

AP1197

Leader in Biomolecular Solutions for Life Science



Phospho-RPS6KA5-T581 Rabbit pAb

Catalog No.: AP1197

Basic Information

Observed MW

90kDa

Calculated MW

90kDa

Category

Polyclonal Antibody

Applications

WB,ELISA

Cross-Reactivity

Rat

Background

Enables ATP binding activity and protein serine/threonine kinase activity. Involved in several processes, including histone-serine phosphorylation; positive regulation of histone modification; and regulation of transcription, DNA-templated. Located in cytoplasm and nucleoplasm.

Recommended Dilutions

WB 1:500 - 1:1000

ELISA Recommended starting concentration is 1 µg/mL. Please optimize the concentration based on your specific assay requirements.

Immunogen Information

Gene ID

9252

Swiss Prot

O75582

Immunogen

Synthetic peptide. This information is considered to be commercially sensitive.

Synonyms

MSK1; RLPK; MSPK1; Phospho-RPS6KA5-T581

Contact

 www.abclonal.com

Product Information

Source

Rabbit

Isotype

IgG

Purification

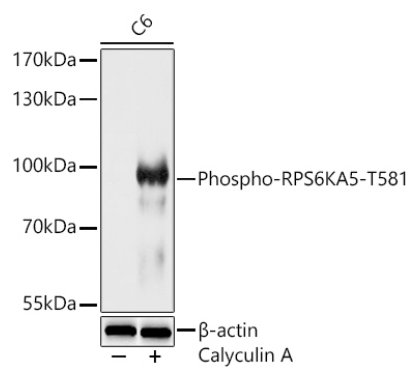
Affinity purification

Storage

Store at -20°C. Avoid freeze / thaw cycles.

Buffer: PBS with 0.01% thimerosal, 50% glycerol, pH7.3.

Validation Data



Western blot analysis of lysates from C6 cells using Phospho-RPS6KA5-T581 Rabbit pAb (AP1197) at 1:1000 dilution. C6 cells were treated with Calyculin A (100 nM) at 37°C for 30 minutes after serum-starvation overnight. Secondary antibody: HRP-conjugated Goat anti-Rabbit IgG (H+L) (AS014) at 1:10000 dilution.

Lysates/proteins: 25 µg per lane.

Blocking buffer: 3% nonfat dry milk in TBST.

Detection: ECL Basic Kit (RM00020).

Exposure time: 60s.