

AP1255

Leader in Biomolecular Solutions for Life Science



# Phospho-MLKL-S345 Rabbit pAb

Catalog No.: AP1255

## Basic Information

### Observed MW

54kDa

### Calculated MW

54kDa

### Category

Polyclonal Antibody

### Applications

WB, ELISA

### Cross-Reactivity

Mouse

## Background

This gene belongs to the protein kinase superfamily. The encoded protein contains a protein kinase-like domain; however, is thought to lack protein kinase activity. This protein plays a critical role in tumor necrosis factor (TNF)-induced necroptosis, a programmed cell death process, via interaction with receptor-interacting protein 3 (Rip3), which is a key signaling molecule in necroptosis pathway. Knockout of this gene in mice showed that it is essential for necroptosis. Alternatively spliced transcript variants have been found for this gene.

## Recommended Dilutions

**WB** 1:100 - 1:500

**ELISA** Recommended starting concentration is 1 µg/mL. Please optimize the concentration based on your specific assay requirements.

## Immunogen Information

### Gene ID

74568

### Swiss Prot

Q9D2Y4

### Immunogen

Synthetic peptide. This information is considered to be commercially sensitive.

### Synonyms

9130019I15Rik; Phospho-MLKL-S345

## Contact

 [www.abclonal.com](http://www.abclonal.com)

## Product Information

### Source

Rabbit

### Isotype

IgG

### Purification

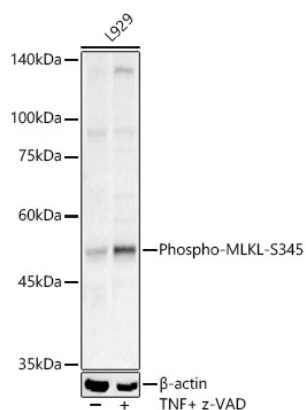
Affinity purification

### Storage

Store at -20°C. Avoid freeze / thaw cycles.

Buffer: PBS with 0.05% proclin300, 50% glycerol, pH7.3.

## Validation Data



Western blot analysis of lysates from L929 cells, using Phospho-MLKL-S345 Rabbit pAb (AP1255) at 1:400 dilution. L929 cells were treated with 20 ng/ml TNF alpha 100 nM Smac mimetic and 20  $\mu$ M z-VAD for 8h  
Secondary antibody: HRP-conjugated Goat anti-Rabbit IgG (H+L) (AS014) at 1:10000 dilution.  
Lysates/proteins: 25 $\mu$ g per lane.  
Blocking buffer: 3% nonfat dry milk in TBST.  
Detection: ECL Basic Kit (RM00020).  
Exposure time: 30s.