

AP1323

Leader in Biomolecular Solutions for Life Science



Phospho-JunD-S255 Rabbit mAb

Catalog No.: AP1323

Recombinant

1 Publications

Basic Information

Observed MW

38kDa/42kDa

Calculated MW

35kDa

Category

SMab Recombinant Monoclonal
Antibody

Applications

WB,IHC-P,ELISA

Cross-Reactivity

Human,Rat

CloneNo number

ARC54895

Recommended Dilutions

WB 1:1000 - 1:5000

IHC-P 1:200 - 1:800

ELISA Recommended starting
concentration is 1
µg/mL. Please optimize
the concentration
based on your specific
assay requirements.

Contact



www.abclonal.com

Background

The protein encoded by this intronless gene is a member of the JUN family, and a functional component of the AP1 transcription factor complex. This protein has been proposed to protect cells from p53-dependent senescence and apoptosis. Alternative translation initiation site usage results in the production of different isoforms (PMID:12105216).

Immunogen Information

Gene ID

3727

Swiss Prot

P17535

Immunogen

Synthetic peptide. This information is considered to be commercially sensitive.

Synonyms

AP-1; Phospho-JunD-S255

Product Information

Source

Rabbit

Isotype

IgG

Purification

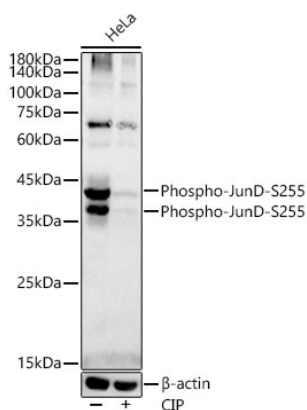
Affinity purification

Storage

Store at -20°C. Avoid freeze / thaw cycles.

Buffer: PBS containing 50% glycerol and 0.05% BSA, preserved with proclin300 or sodium azide (as specified on the Certificate of Analysis), pH 7.3.

Validation Data



Western blot analysis of lysates from HeLa cells, using Phospho-JunD-S255 Rabbit mAb (AP1323) at 1:2000 dilution. HeLa cells were treated by CIP(20uL/400ul) at 37°C for 1 hour.

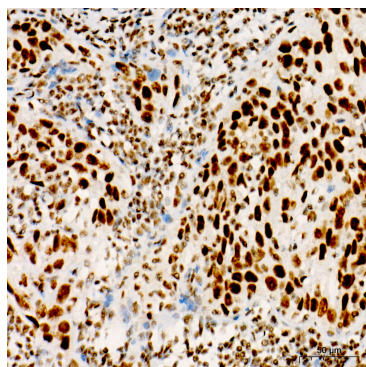
Secondary antibody: HRP-conjugated Goat anti-Rabbit IgG (H+L) (AS014) at 1:10000 dilution.

Lysates/proteins: 25µg per lane.

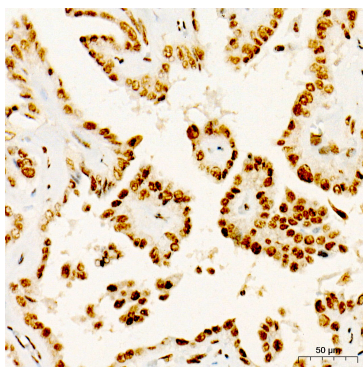
Blocking buffer: 3% nonfat dry milk in TBST.

Detection: ECL Basic Kit (RM00020).

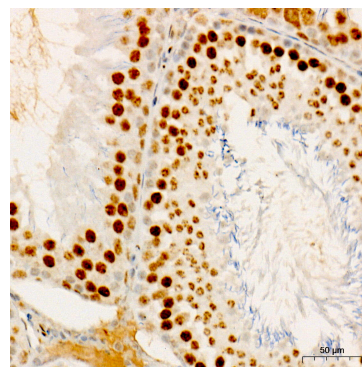
Exposure time: 90s.



Immunohistochemistry analysis of paraffin-embedded Human cervix cancer tissue using Phospho-JunD-S255 Rabbit mAb (AP1323) at a dilution of 1:500 (40x lens). High pressure antigen retrieval performed with 0.01M Citrate Buffer (pH 6.0) prior to IHC staining.



Immunohistochemistry analysis of paraffin-embedded Human thyroid cancer tissue using Phospho-JunD-S255 Rabbit mAb (AP1323) at a dilution of 1:500 (40x lens). High pressure antigen retrieval performed with 0.01M Citrate Buffer (pH 6.0) prior to IHC staining.



Immunohistochemistry analysis of paraffin-embedded Rat testis tissue using Phospho-JunD-S255 Rabbit mAb (AP1323) at a dilution of 1:500 (40x lens). High pressure antigen retrieval performed with 0.01M Citrate Buffer (pH 6.0) prior to IHC staining.