

AP1343

Leader in Biomolecular Solutions for Life Science



# Phospho-Smad2-S465/S467 + Smad3-S423/S425 Rabbit mAb

Catalog No.: AP1343

Recombinant

3 Publications

## Basic Information

### Observed MW

52kDa/60kDa

### Calculated MW

48kDa/52kDa/25kDa/35kDa/43kDa

### Category

SMab Recombinant Monoclonal Antibody

### Applications

WB, ELISA

### Cross-Reactivity

Human, Mouse, Rat

### CloneNo number

ARC56314

## Background

The protein encoded by this gene belongs to the SMAD, a family of proteins similar to the gene products of the *Drosophila* gene *mothers against decapentaplegic* (*Mad*) and the *C. elegans* gene *Sma*. SMAD proteins are signal transducers and transcriptional modulators that mediate multiple signaling pathways. This protein mediates the signal of the transforming growth factor (TGF)- $\beta$ , and thus regulates multiple cellular processes, such as cell proliferation, apoptosis, and differentiation. This protein is recruited to the TGF- $\beta$  receptors through its interaction with the SMAD anchor for receptor activation (SARA) protein. In response to TGF- $\beta$  signal, this protein is phosphorylated by the TGF- $\beta$  receptors. The phosphorylation induces the dissociation of this protein with SARA and the association with the family member SMAD4. The association with SMAD4 is important for the translocation of this protein into the nucleus, where it binds to target promoters and forms a transcription repressor complex with other cofactors. This protein can also be phosphorylated by activin type 1 receptor kinase, and mediates the signal from the activin. Alternatively spliced transcript variants have been observed for this gene. [provided by RefSeq, May 2012]

## Recommended Dilutions

WB 1:1000 - 1:5000

ELISA Recommended starting concentration is 1  $\mu$ g/mL. Please optimize the concentration based on your specific assay requirements.

## Immunogen Information

### Gene ID

4087/4088

### Swiss Prot

Q15796/P84022

### Immunogen

Synthetic peptide. This information is considered to be commercially sensitive.

### Synonyms

HSPC193; HsT17436; JV15-2; LDS1C; LDS3; MADH3; Phospho-Smad2-S465/S467 + Smad3-S423/S425

## Contact

 [www.abclonal.com](http://www.abclonal.com)

## Product Information

### Source

Rabbit

### Isotype

IgG

### Purification

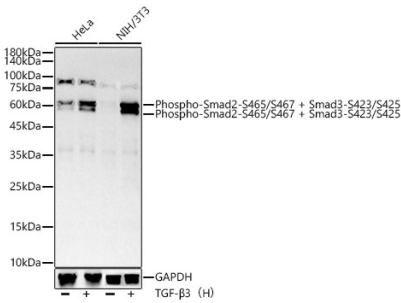
Affinity purification

### Storage

Store at -20°C. Avoid freeze / thaw cycles.

Buffer: PBS with 0.09% Sodium azide, 0.05% BSA, 50% glycerol, pH 7.3.

# Validation Data



Western blot analysis of various lysates, using Phospho-Smad2-S465/S467 + Smad3-S423/S425 Rabbit mAb (AP1343) at 1:2000 dilution. HeLa and NIH/3T3 cells were treated with TGF-β3 (H) (200 ng/mL) at 37°C for 30 minutes after serum-starvation overnight.

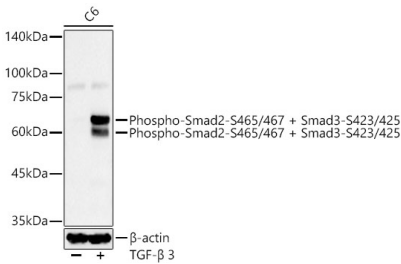
Secondary antibody: HRP-conjugated Goat anti-Rabbit IgG (H+L) (AS014) at 1:10000 dilution.

Lysates/proteins: 25μg per lane.

Blocking buffer: 3% nonfat dry milk in TBST.

Detection: ECL Basic Kit (RM00020).

Exposure time: 60s.



Western blot analysis of various lysates using Phospho-Smad2-S465/S467 + Smad3-S423/S425 Rabbit mAb (AP1343) at 1:1000 dilution. C6 cells were treated with TGF-β3 (200 ng/mL) at 37°C for 30 minutes after serum-starvation overnight.

Secondary antibody: HRP-conjugated Goat anti-Rabbit IgG (H+L) (AS014) at 1:10000 dilution.

Lysates/proteins: 25μg per lane.

Blocking buffer: 3% nonfat dry milk in TBST.

Detection: ECL Basic Kit (RM00020).

Exposure time: 30s.