

AP1369

Leader in Biomolecular Solutions for Life Science



# Phospho-STING/TMEM173-S366 Rabbit mAb

Catalog No.: AP1369

Recombinant

2 Publications

## Basic Information

### Observed MW

40kDa

### Calculated MW

42kDa

### Category

SMab Recombinant Monoclonal  
Antibody

### Applications

WB,ELISA

### Cross-Reactivity

Human

### CloneNo number

ARC57910

## Recommended Dilutions

**WB** 1:1000 - 1:2000

**ELISA** Recommended starting concentration is 1 µg/mL. Please optimize the concentration based on your specific assay requirements.

## Contact



[www.abclonal.com](http://www.abclonal.com)

## Background

This gene encodes a five transmembrane protein that functions as a major regulator of the innate immune response to viral and bacterial infections. The encoded protein is a pattern recognition receptor that detects cytosolic nucleic acids and transmits signals that activate type I interferon responses. The encoded protein has also been shown to play a role in apoptotic signaling by associating with type II major histocompatibility complex. Mutations in this gene are the cause of infantile-onset STING-associated vasculopathy. Alternate splicing results in multiple transcript variants.

## Immunogen Information

### Gene ID

340061

### Swiss Prot

Q86WV6

### Immunogen

Synthetic peptide. This information is considered to be commercially sensitive.

### Synonyms

ERIS; MITA; MPYS; SAVI; NET23; STING; hMITA; hSTING; TMEM173; STING-beta; Phospho-STING/TMEM173-S366

## Product Information

### Source

Rabbit

### Isotype

IgG

### Purification

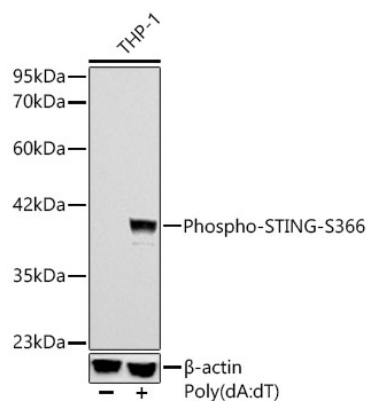
Affinity purification

### Storage

Store at -20°C. Avoid freeze / thaw cycles.

Buffer: PBS with 0.09% sodium azide,0.05% BSA,50% glycerol,pH7.3.

## Validation Data



Western blot analysis of lysates from THP-1 cells, using Phospho-STING/TMEM173-S366 Rabbit mAb (AP1369) at 1:1000 dilution. THP-1 cells were transfected with poly(dA:dT) (5μg/mL) for 3 hours.  
Secondary antibody: HRP-conjugated Goat anti-Rabbit IgG (H+L) (AS014) at 1:10000 dilution.  
Lysates/proteins: 25μg per lane.  
Blocking buffer: 3% nonfat dry milk in TBST.  
Detection: ECL Basic Kit (RM00020).  
Exposure time: 10s.