

AP1375

Leader in Biomolecular Solutions for Life Science



Phospho-PKC alpha-T638 + PKC beta II-T641 Rabbit mAb

Catalog No.: AP1375

Recombinant

Basic Information

Observed MW

80kDa

Calculated MW

76kDa/77kDa

Category

SMab Recombinant Monoclonal Antibody

Applications

WB, ELISA

Cross-Reactivity

Human

CloneNo number

ARC58024

Background

Protein kinase C (PKC) is a family of serine- and threonine-specific protein kinases that can be activated by calcium and second messenger diacylglycerol. PKC family members phosphorylate a wide variety of protein targets and are known to be involved in diverse cellular signaling pathways. PKC family members also serve as major receptors for phorbol esters, a class of tumor promoters. Each member of the PKC family has a specific expression profile and is believed to play a distinct role in cells. The protein encoded by this gene is one of the PKC family members. This protein kinase has been reported to be involved in many different cellular functions, such as B cell activation, apoptosis induction, endothelial cell proliferation, and intestinal sugar absorption. Studies in mice also suggest that this kinase may also regulate neuronal functions and correlate fear-induced conflict behavior after stress. Alternatively spliced transcript variants encoding distinct isoforms have been reported.

Recommended Dilutions

WB 1:2000 - 1:7000

ELISA Recommended starting concentration is 1 µg/mL. Please optimize the concentration based on your specific assay requirements.

Immunogen Information

Gene ID

5578/5579

Swiss Prot

P17252/P05771

Immunogen

Synthetic peptide. This information is considered to be commercially sensitive.

Synonyms

PKC-beta; PKCB; PRKCB1; PRKCB2; Phospho-PKC alpha-T638 + PKC beta II-T641

Contact

 www.abclonal.com

Product Information

Source

Rabbit

Isotype

IgG

Purification

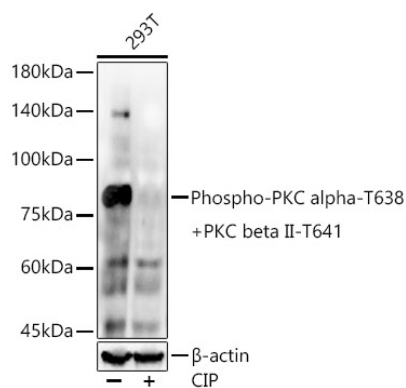
Affinity purification

Storage

Store at -20°C. Avoid freeze / thaw cycles.

Buffer: PBS containing 50% glycerol and 0.05% BSA, preserved with proclin300 or sodium azide (as specified on the Certificate of Analysis), pH 7.3.

Validation Data



Western blot analysis of lysates from 293T cells, using Phospho-PKC alpha-T638 + PKC beta II-T641 Rabbit mAb (AP1375) at 1:6000 dilution. 293T cells were treated by CIP (20 μ L/400 μ L) at 37°C for 1 hour. Secondary antibody: HRP-conjugated Goat anti-Rabbit IgG (H+L) (AS014) at 1:10000 dilution. Lysates/proteins: 25 μ g per lane. Blocking buffer: 3% nonfat dry milk in TBST. Detection: ECL Enhanced Kit (RM00021). Exposure time: 60s.