

AP1445

Leader in Biomolecular Solutions for Life Science



# Phospho-Tau-T205 Rabbit mAb

Catalog No.: AP1445

Recombinant

1 Publications

## Basic Information

### Observed MW

50-80kDa

### Calculated MW

79kDa

### Category

SMab Recombinant Monoclonal  
Antibody

### Applications

WB,IHC-P,IF/ICC,ELISA

### Cross-Reactivity

Mouse,Rat

### CloneNo number

ARC62302

## Background

This gene encodes the microtubule-associated protein tau (MAPT) whose transcript undergoes complex, regulated alternative splicing, giving rise to several mRNA species. MAPT transcripts are differentially expressed in the nervous system, depending on stage of neuronal maturation and neuron type. MAPT gene mutations have been associated with several neurodegenerative disorders such as Alzheimer's disease, Pick's disease, frontotemporal dementia, cortico-basal degeneration and progressive supranuclear palsy.

## Recommended Dilutions

**WB** 1:500 - 1:1000

**IHC-P** 1:50 - 1:200

**IF/ICC** 1:50 - 1:200

**ELISA** Recommended starting concentration is 1 µg/mL. Please optimize the concentration based on your specific assay requirements.

## Immunogen Information

### Gene ID

4137

### Swiss Prot

P10636

### Immunogen

Synthetic peptide. This information is considered to be commercially sensitive.

### Synonyms

TAU; MSTD; PPND; DDPAC; MAPTL; MTBT1; MTBT2; tau-40; FTDP-17; PPP1R103; Tau-PHF6; Phospho-Tau-T205

## Product Information

### Source

Rabbit

### Isotype

IgG

### Purification

Affinity purification

### Storage

Store at -20°C. Avoid freeze / thaw cycles.

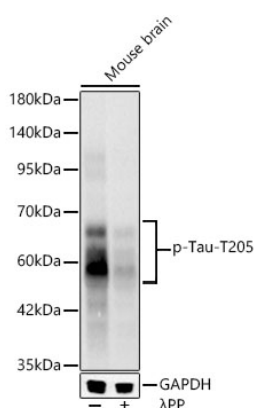
Buffer: PBS containing 50% glycerol and 0.05% BSA, preserved with proclin300 or sodium azide (as specified on the Certificate of Analysis), pH 7.3.

## Contact

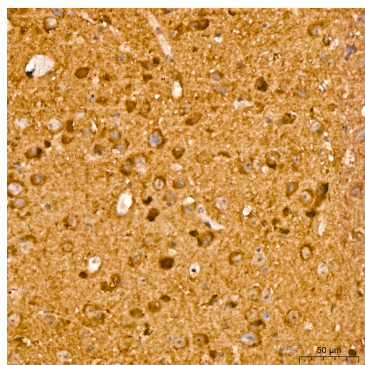


[www.abclonal.com](http://www.abclonal.com)

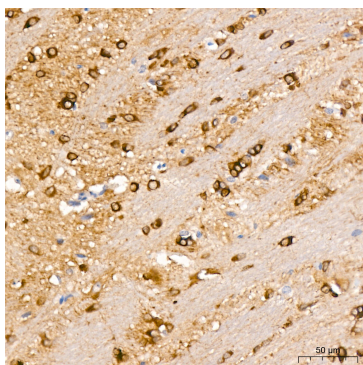
## Validation Data



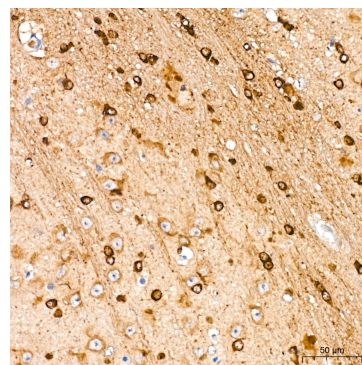
Western blot analysis of lysates from Mouse brain, using Phospho-Tau-T205 Rabbit mAb (AP1445) at 1:1000 dilution.  
Secondary antibody: HRP-conjugated Goat anti-Rabbit IgG (H+L) (AS014) at 1:10000 dilution.  
Lysates/proteins: 25µg per lane.  
Blocking buffer: 3% nonfat dry milk in TBST.  
Detection: ECL Basic Kit (RM00020).  
Exposure time: 20s.



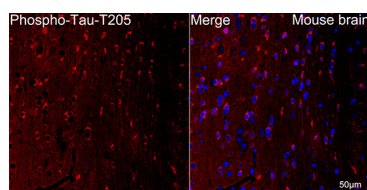
Immunohistochemistry analysis of paraffin-embedded Mouse brain tissue using Phospho-Tau-T205 Rabbit mAb (AP1445) at a dilution of 1:200 (40x lens). High pressure antigen retrieval performed with 0.01M Citrate buffer (pH 6.0) prior to IHC staining.



Immunohistochemistry analysis of paraffin-embedded Rat brain tissue using Phospho-Tau-T205 Rabbit mAb (AP1445) at a dilution of 1:200 (40x lens). High pressure antigen retrieval performed with 0.01M Citrate buffer (pH 6.0) prior to IHC staining.



Immunohistochemistry analysis of paraffin-embedded (5XFAD) Mouse brain tissue using Phospho-Tau-T205 Rabbit mAb (AP1445) at a dilution of 1:200 (40x lens). High pressure antigen retrieval performed with 0.01M Citrate buffer (pH 6.0) prior to IHC staining.



Confocal imaging of paraffin-embedded Mouse brain tissue using Phospho-Tau-T205 Rabbit mAb (AP1445, dilution 1:200) followed by a further incubation with Cy3 Goat Anti-Rabbit IgG (H+L) (AS007, dilution 1:500) (Red). DAPI was used for nuclear staining (Blue). Microwave antigen retrieval performed with 0.01M Citrate Buffer

## Validation Data

---

(pH 6.0) prior to IF staining.  
Objective: 40x.