

RM17900

Leader in Biomolecular Solutions for Life Science



# Rabbit anti-Rat IFN-gamma mAb (CAP)

Catalog No.: RM17900

## Basic Information

### Catagory

Matched Antibody Pair

### Applications

ELISA

## Product Information

### Ig Type

Rabbit IgG

### Purification

Affinity purification

### Endotoxin Level

### Storage

Store unopened kit at 2-8 °C for 1 week. If more than one week, please keep the components of the kit according to the instructions. Do not use past kit expiration date.

**Avoid repeated freeze-thaw cycles.**

### Formulation

Supplied as a 0.2um filtered solution in PBS with 0.05%ProClin 300, PH 7.4.

## Contact



[www.abclonal.com](http://www.abclonal.com)

## Background

Predicted to enable cytokine activity. Involved in several processes, including negative regulation of cell population proliferation; positive regulation of NMDA glutamate receptor activity; and positive regulation of macromolecule metabolic process. Located in several cellular components, including extracellular space; neuron projection; and perikaryon. Used to study several diseases, including Chagas disease; allergic conjunctivitis; allergic rhinitis; renal fibrosis; and ureteral obstruction. Biomarker of several diseases, including abdominal aortic aneurysm; autoimmune thyroiditis; pulpitis; tongue squamous cell carcinoma; and visual epilepsy. Human ortholog(s) of this gene implicated in several diseases, including ataxia telangiectasia; autoimmune disease (multiple); eczema herpeticum; factor VIII deficiency; and leukemia (multiple). Orthologous to human IFNG (interferon gamma).

## Immunogen Information

### Immunogen

Recombinant Rat IFN-gamma protein

## Cross-Reactivity

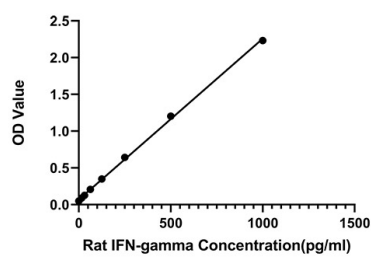
No cross-reactivity in ELISA with recombinant<br>Rat IL-1  $\beta$ , Rat IL-2, Rat IL-4, Rat IL-6, Rat IL-10, Rat TNF- $\alpha$ , Human IFN- $\gamma$ , Mouse IFN- $\gamma$

## Assay Applications

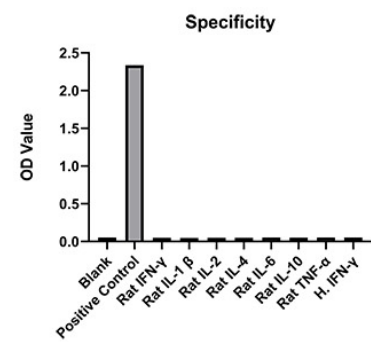
Rat IFN-gamma Sandwich Immunoassay

		Recommended Concentration	Sample
ELISA	Capture	0.5-4ug/mL	Rabbit anti-Rat IFN-gamma mAb(Cat. No.RM17900)
	Detection	0.333-0.0833ug/mL	Rabbit anti-Rat IFN-gamma mAb(Cat. No.RM17901)
	Standard	15.6-1000pg/mL	Recombinant Rat IFN-gamma Protein

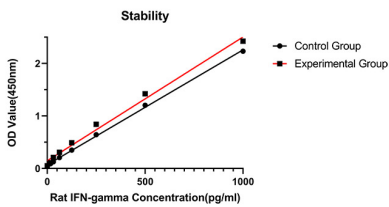
Validation Data



This standard curve is only for demonstration purposes. A standard curve should be generated for each assay.



No significant cross-reactivity or interference was observed.



Placed at 37°C for 3 days, the stability of the standard curve all conform to CV <10%.