

RP00002

Leader in Biomolecular Solutions for Life Science



Recombinant Human IL-1 beta Protein

Catalog No.: RP00002

Recombinant

1 Publications

Sequence Information

Species	Gene ID	Swiss Prot
<I>E. coli</I>	3553	P01584

Tags

C-His

Synonyms

IL-1;IL1-BETA;IL1F2;IL1 beta;IL1B

Product Information

Source

<I>E. coli</I>

Purification

> 95% by SDS-PAGE.

Endotoxin

< 0.1 EU/μg of the protein by LAL method.

Formulation

Lyophilized from a 0.22 μm filtered solution of PBS, pH 7.4. Contact us for customized product form or formulation.

Reconstitution

Centrifuge the vial before opening. Reconstitute to a concentration of 0.1-0.5 mg/mL in sterile distilled water. Avoid vortex or vigorously pipetting the protein. For long term storage, it is recommended to add a carrier protein or stabilizer (e.g. 0.1% BSA, 5% HSA, 10% FBS or 5% Trehalose), and aliquot the reconstituted protein solution to minimize free-thaw cycles.

Background

Interleukin-1 beta (IL1 beta or IL1B) also known as catabin, is a member of the interleukin 1 cytokine family. This cytokine is produced by activated macrophages as a proprotein, which is proteolytically processed to its active form by caspase 1 (CASP1/ICE). This cytokine is an important mediator of the inflammatory response, and is involved in a variety of cellular activities, including cell proliferation, differentiation, and apoptosis. The induction of cyclooxygenase-2 (PTGS2/COX2) by this cytokine in the central nervous system (CNS) is found to contribute to inflammatory pain hypersensitivity.

Basic Information

Description

Recombinant Human IL-1 beta Protein is produced by <I>E. coli</I> expression system. The target protein is expressed with sequence (Ala117-Ser269) of human IL-1 beta (Accession #NP_000567.1) fused with an initial Met at the N-terminus and a 6×His tag at the C-terminus.

Bio-Activity

1. Measured in a cell proliferation assay using D10.G4.1 mouse helper T cells. The ED₅₀ for this effect is 0.217-0.870 ng/mL, corresponding to a specific activity of $1.15 \times 10^6 \sim 4.61 \times 10^6$ units/mg. 2. Measured by its binding ability in a functional ELISA. Immobilized Human IL-1 beta (Catalog: RP00002) at 10 μg/mL (100 μL/well) can bind Biotinylated Human IL-1R1 (Catalog: RP01036) with a linear range of 0.002-1 μg/mL.

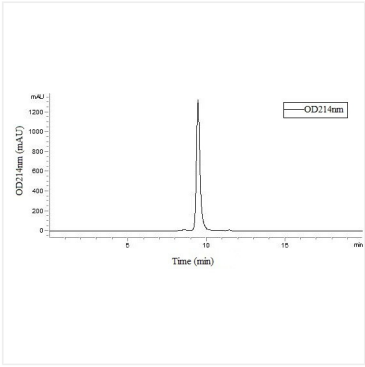
Storage

Store at -20°C. Store the lyophilized protein at -20°C to -80 °C up to 1 year from the date of receipt. After reconstitution, the protein solution is stable at -20°C for 3 months, at 2-8°C for up to 1 week. Avoid repeated freeze/thaw cycles.

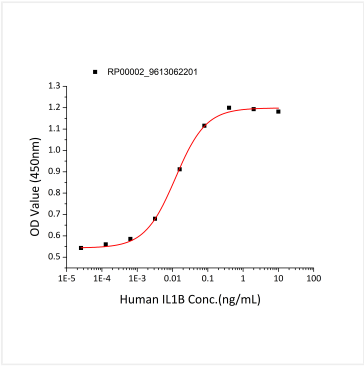
Contact



www.abclonal.com



Recombinant Human IL-1 beta Protein is greater than 95% as determined by SEC-HPLC.



Recombinant Human IL-1 beta promotes the proliferation of D10.G4.1 mouse helper T cells. The ED₅₀ for this effect is 6.04-24.16 pg/mL, corresponding to a specific activity of 4.14×10⁷~1.66×10⁸ units/mg.