

RP00012

Leader in Biomolecular Solutions for Life Science



Recombinant Human UBE2D3 Protein

Catalog No.: RP00012

Recombinant

Sequence Information

Species	Gene ID	Swiss Prot
<I>E. coli</I>	7323	P61077

Tags

C-His

Synonyms

UBE2D3;E2(17)KB3;UBC4/5;UBCH5C

Product Information

Source

<I>E. coli</I>

Purification

> 95% by SDS-PAGE.

Endotoxin

< 0.1 EU/μg of the protein by LAL method.

Formulation

Lyophilized from a 0.22 μm filtered solution of PBS, pH 7.4. Contact us for customized product form or formulation.

Reconstitution

Centrifuge the vial before opening. Reconstitute to a concentration of 0.1-0.5 mg/mL in sterile distilled water. Avoid vortex or vigorously pipetting the protein. For long term storage, it is recommended to add a carrier protein or stabilizer (e.g. 0.1% BSA, 5% HSA, 10% FBS or 5% Trehalose), and aliquot the reconstituted protein solution to minimize free-thaw cycles.

Background

The modification of proteins with ubiquitin is an important cellular mechanism for targeting abnormal or short-lived proteins for degradation. Ubiquitination involves at least three classes of enzymes: ubiquitin-activating enzymes, or E1s, ubiquitin-conjugating enzymes, or E2s, and ubiquitin-protein ligases, or E3s. This gene encodes a member of the E2 ubiquitin-conjugating enzyme family. This enzyme functions in the ubiquitination of the tumor-suppressor protein p53, which is induced by an E3 ubiquitin-protein ligase.

Basic Information

Description

Recombinant Human UBE2D3 Protein is produced by <I>E. coli</I> expression system. The target protein is expressed with sequence (Met1-Met147) of human UBE2D3 (Accession #NP_003331.1) fused with a 6×His tag at the C-terminus.

Bio-Activity

Storage

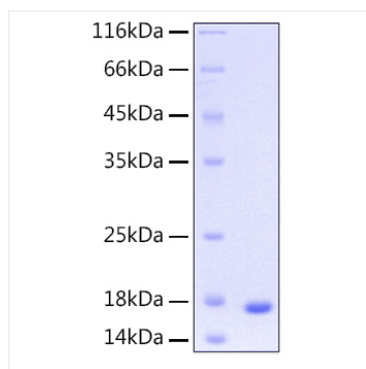
Store at -20°C. Store the lyophilized protein at -20°C to -80 °C up to 1 year from the date of receipt.
After reconstitution, the protein solution is stable at -20°C for 3 months, at 2-8°C for up to 1 week. Avoid repeated freeze/thaw cycles.

Contact



www.abclonal.com

Validation Data



Recombinant Human UBE2D3
Protein was determined by SDS-
PAGE with Coomassie Blue, showing
a band at 17 kDa.