

RP00039

Leader in Biomolecular Solutions for Life Science



# Recombinant Human CNTF Protein

Catalog No.: RP00039

Recombinant

## Sequence Information

Species	Gene ID	Swiss Prot
<I>E. coli</I>	1270	P26441

### Tags

C-His

### Synonyms

CNTF;HCNTF

## Product Information

### Source

<I>E. coli</I>

### Purification

> 97% by SDS-PAGE.

### Endotoxin

< 1.0 EU/μg of the protein by LAL method.

### Formulation

Lyophilized from a 0.22 μm filtered solution of 20mM Tris, 150mM NaCl, pH 8.0. Contact us for customized product form or formulation.

### Reconstitution

Centrifuge the vial before opening. Reconstitute to a concentration of 0.1-0.5 mg/mL in sterile distilled water. Avoid vortex or vigorously pipetting the protein. For long term storage, it is recommended to add a carrier protein or stabilizer (e.g. 0.1% BSA, 5% HSA, 10% FBS or 5% Trehalose), and aliquot the reconstituted protein solution to minimize free-thaw cycles.

## Background

The protein is a polypeptide hormone whose actions appear to be restricted to the nervous system where it promotes neurotransmitter synthesis and neurite outgrowth in certain neuronal populations. The protein is a potent survival factor for neurons and oligodendrocytes and may be relevant in reducing tissue destruction during inflammatory attacks. A mutation in this protein, which results in aberrant splicing, leads to ciliary neurotrophic factor deficiency, but this phenotype is not causally related to neurologic disease.

## Basic Information

### Description

Recombinant Human CNTF Protein is produced by <I>E. coli</I> expression system. The target protein is expressed with sequence (Met1-Met200) of human CNTF (Accession #NP\_000605.1) fused with a 6×His tag at the C-terminus.

### Bio-Activity

Measured in a cell proliferation assay using TF-1 human erythroleukemic cell line. The ED<sub>50</sub> for this effect is 13.5-54 ng/mL.

### Storage

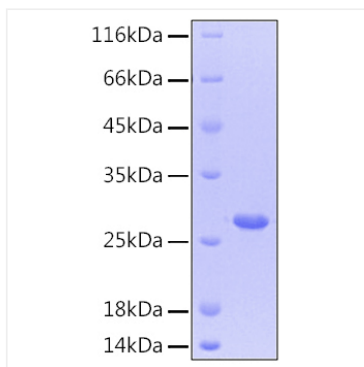
Store at -20°C. Store the lyophilized protein at -20°C to -80 °C up to 1 year from the date of receipt. After reconstitution, the protein solution is stable at -20°C for 3 months, at 2-8°C for up to 1 week. Avoid repeated freeze/thaw cycles.

## Contact

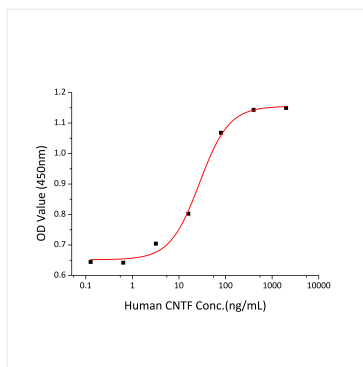


[www.abclonal.com](http://www.abclonal.com)

## Validation Data



Active Recombinant Human CNTF Protein was determined by SDS-PAGE with Coomassie Blue, showing a band at 27 kDa.



Recombinant Human CNTF stimulates cell proliferation of the TF-1 human erythroleukemic cell line. The ED<sub>50</sub> for this effect is 13.5-54 ng/mL.