

RP00062

Leader in Biomolecular Solutions for Life Science



# Recombinant Human Bcl-2 Protein

Catalog No.: RP00062

Recombinant

## Sequence Information

| Species        | Gene ID | Swiss Prot |
|----------------|---------|------------|
| <I>E. coli</I> | 596     | P10415     |

### Tags

No tag

### Synonyms

BCL2; Bcl-2; PPP1R50; apoptosis regulator Bcl-2;Bcl-2;PPP1R50

## Product Information

### Source

<I>E. coli</I>

### Purification

> 90% by SDS-PAGE.

### Endotoxin

< 1.0 EU/μg of the protein by LAL method.

### Formulation

Lyophilized from a 0.22 μm filtered solution of 20mM HEPES, 50mM KCl, pH 7.5. Contact us for customized product form or formulation.

### Reconstitution

Centrifuge the vial before opening. Reconstitute to a concentration of 0.1-0.5 mg/mL in sterile distilled water. Avoid vortex or vigorously pipetting the protein. For long term storage, it is recommended to add a carrier protein or stabilizer (e.g. 0.1% BSA, 5% HSA, 10% FBS or 5% Trehalose), and aliquot the reconstituted protein solution to minimize free-thaw cycles.

## Background

This protein is an integral outer mitochondrial membrane protein that blocks the apoptotic death of some cells such as lymphocytes. Constitutive expression of BCL2, such as in the case of translocation of BCL2 to Ig heavy chain locus, is thought to be the cause of follicular lymphoma.

## Basic Information

### Description

Recombinant Human Bcl-2 Protein is produced by <I>E. coli</I> expression system. The target protein is expressed with sequence (Ala2-Asp211) of human BCL2 (Accession #NP\_000624.2) fused with no tags.

### Bio-Activity

Measured by its binding ability in a functional ELISA. Immobilized Human BCL-XL Protein at 2 μg/mL (100 μL/well) can bind BCL2 (Catalog: RP00062) with a linear range of 1.95-126.76 ng/mL.

### Storage

Store at -20°C. Store the lyophilized protein at -20°C to -80 °C up to 1 year from the date of receipt. After reconstitution, the protein solution is stable at -20°C for 3 months, at 2-8°C for up to 1 week. Avoid repeated freeze/thaw cycles.

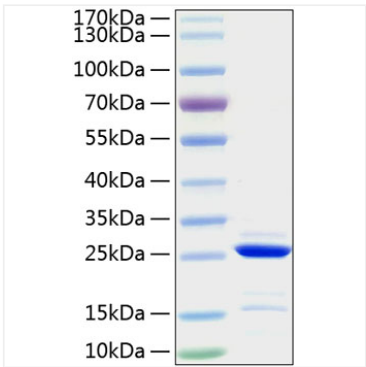
## Contact



[www.abclonal.com](http://www.abclonal.com)

# Validation Data

---



Recombinant Human Bcl-2 Protein was determined by SDS-PAGE under reducing conditions with Coomassie Blue.