

RP00101

Leader in Biomolecular Solutions for Life Science



Recombinant Human MCAM/CD146 Protein

Catalog No.: RP00101

Recombinant

Sequence Information

Species	Gene ID	Swiss Prot
HEK293 cells	4162	P43121

Tags

C-His

Synonyms

CD146; MUC18;MCAM; CD146; cell surface glycoprotein MUC18;MUC18

Product Information

Source	Purification
HEK293 cells	> 97% by SDS-PAGE.

Endotoxin

< 0.1 EU/μg of the protein by LAL method.

Formulation

Lyophilized from a 0.22 μm filtered solution of PBS, pH 7.4. Contact us for customized product form or formulation.

Reconstitution

Centrifuge the vial before opening. Reconstitute to a concentration of 0.1-0.5 mg/mL in sterile distilled water. Avoid vortex or vigorously pipetting the protein. For long term storage, it is recommended to add a carrier protein or stabilizer (e.g. 0.1% BSA, 5% HSA, 10% FBS or 5% Trehalose), and aliquot the reconstituted protein solution to minimize free-thaw cycles.

Background

Plays a role in cell adhesion, and in cohesion of the endothelial monolayer at intercellular junctions in vascular tissue. Its expression may allow melanoma cells to interact with cellular elements of the vascular system, thereby enhancing hematogenous tumor spread. Could be an adhesion molecule active in neural crest cells during embryonic development. Acts as surface receptor that triggers tyrosine phosphorylation of FYN and PTK2/FAK1, and a transient increase in the intracellular calcium concentration.

Basic Information

Description

Recombinant Human MCAM/CD146 Protein is produced by HEK293 cells expression system. The target protein is expressed with sequence (Val24-Gly559) of human CD146/MCAM (Accession #NP_006491.2) fused with a 6×His tag at the C-terminus.

Bio-Activity

Storage

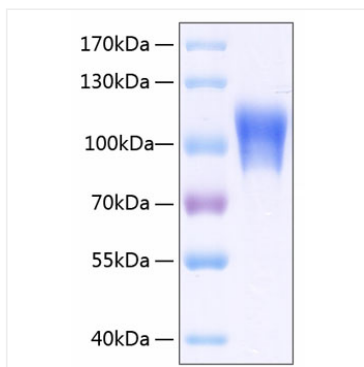
Store at -20°C. Store the lyophilized protein at -20°C to -80 °C up to 1 year from the date of receipt. After reconstitution, the protein solution is stable at -20°C for 3 months, at 2-8°C for up to 1 week. Avoid repeated freeze/thaw cycles.

Contact



www.abclonal.com

Validation Data



Recombinant Human MCAM/CD146 Protein was determined by SDS-PAGE with Coomassie Blue, showing a band at 90-120 kDa.