

RP00119

Leader in Biomolecular Solutions for Life Science



# Recombinant Human ALCAM/CD166 Protein

Catalog No.: RP00119

Recombinant

## Sequence Information

Species	Gene ID	Swiss Prot
HEK293 cells	214	Q13740

### Tags

C-hFc&His

### Synonyms

ALCAM;CD166;MEMD; MEMD

## Product Information

Source	Purification
HEK293 cells	> 97% by SDS-PAGE.

### Endotoxin

< 0.1 EU/μg of the protein by LAL method.

### Formulation

Lyophilized from a 0.22 μm filtered solution of PBS, pH 7.4. Contact us for customized product form or formulation.

### Reconstitution

Centrifuge the vial before opening. Reconstitute to a concentration of 0.1-0.5 mg/mL in sterile distilled water. Avoid vortex or vigorously pipetting the protein. For long term storage, it is recommended to add a carrier protein or stabilizer (e.g. 0.1% BSA, 5% HSA, 10% FBS or 5% Trehalose), and aliquot the reconstituted protein solution to minimize free-thaw cycles.

## Background

This protein is activated leukocyte cell adhesion molecule (ALCAM), also known as CD166 (cluster of differentiation 166), which is a member of a subfamily of immunoglobulin receptors with five immunoglobulin-like domains (VVC2C2C2) in the extracellular domain. This protein binds to T-cell differentiation antigen CD6, and is implicated in the processes of cell adhesion and migration. Multiple alternatively spliced transcript variants encoding different isoforms have been found.

## Basic Information

### Description

Recombinant Human ALCAM/CD166 Protein is produced by HEK293 expression system. The target protein is expressed with sequence (Met1-Ala526) of human ALCAM/CD166 (Accession #NP\_001618.2) fused with an Fc, 6×His tag at the C-terminus.

### Bio-Activity

1. Measured by its binding ability in a functional ELISA. Immobilized Human CD6 at 1 μg/mL (100 μL/well) can bind Human CD166 with a linear range of 0.05-1.2 ng/mL. 2. Measured by its ability to block adhesion of Jurkat cells to immobilized Recombinant Human CD6 Protein. The ED<sub>50</sub> for this effect is 2.7-10.8 μg/mL.

### Storage

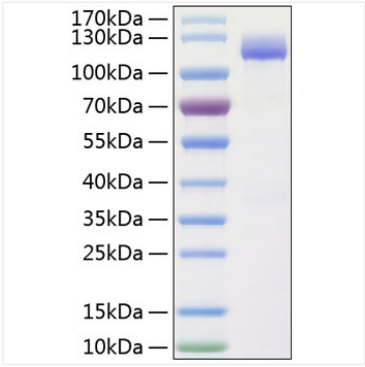
Store at -20°C. Store the lyophilized protein at -20°C to -80 °C up to 1 year from the date of receipt. After reconstitution, the protein solution is stable at -20°C for 3 months, at 2-8°C for up to 1 week. Avoid repeated freeze/thaw cycles.

## Contact

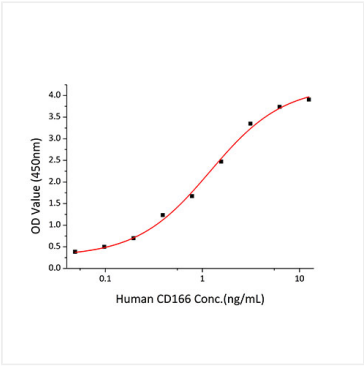


[www.abclonal.com](http://www.abclonal.com)

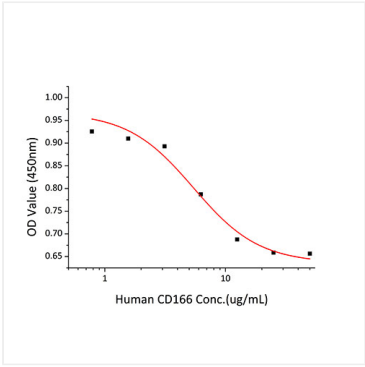
# Validation Data



Active Recombinant Human ALCAM/CD166 Protein was determined by SDS-PAGE with Coomassie Blue, showing a band at 120 kDa.



Immobilized recombinant Human CD6 at 1 µg/mL (100 µL/well) can bind Human CD166 with a linear range of 0.05-1.2ng/mL.



Recombinant Human CD166 block adhesion of Jurkat cells to immobilized Recombinant Human CD6 Protein . The ED<sub>50</sub> for this effect is 2.7-10.8 µg/mL.