

RP00124

Leader in Biomolecular Solutions for Life Science



# Recombinant Human c-Kit ligand/KITLG/SCF Protein

Catalog No.: RP00124

Recombinant

## Sequence Information

Species	Gene ID	Swiss Prot
HEK293 cells	4254	P21583

### Tags

C-His

### Synonyms

KITLG;DCUA;DFNA69;FPH2;FPHH;KL-1;  
Kitl;MGF;SCF;SF;SHEP7

## Product Information

### Source

HEK293 cells

### Purification

> 97% by SDS-  
PAGE.

### Endotoxin

< 0.1 EU/μg of the protein by LAL  
method.

### Formulation

Lyophilized from a 0.22 μm filtered  
solution of PBS, pH 7.4. Contact us for  
customized product form or  
formulation.

### Reconstitution

Centrifuge the vial before opening.  
Reconstitute to a concentration of  
0.1-0.5 mg/mL in sterile distilled water.  
Avoid vortex or vigorously pipetting  
the protein. For long term storage, it is  
recommended to add a carrier protein  
or stabilizer (e.g. 0.1% BSA, 5% HSA,  
10% FBS or 5% Trehalose), and aliquot  
the reconstituted protein solution to  
minimize free-thaw cycles.

## Background

The protein is tyrosine-kinase receptor. This ligand is a pleiotropic factor that acts in utero in germ cell and neural cell development, and hematopoiesis, all believed to reflect a role in cell migration. In adults, it functions pleiotropically, while mostly noted for its continued requirement in hematopoiesis.

## Basic Information

### Description

Recombinant Human c-Kit ligand/KITLG/SCF Protein is produced by HEK293 cells expression system. The target protein is expressed with sequence (Glu26-His214) of human SCF/C-kit ligand (Accession #NP\_000890.1) fused with a 6×His tag at the C-terminus.

### Bio-Activity

1. Measured in a cell proliferation assay using TF-1 Human erythroleukemic cells. The ED<sub>50</sub> for this effect is 0.08-0.3 ng/mL. 2. Measured by its binding ability in a functional ELISA. Immobilized recombinant human SCF at 1 μg/mL (100 μL/well) can bind recombinant human CD117 with a linear range of 1-6 ng/mL.

### Storage

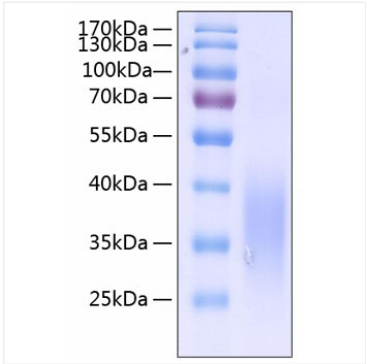
Store at -20°C. Store the lyophilized protein at -20°C to -80 °C up to 1 year from the date of receipt. After reconstitution, the protein solution is stable at -20°C for 3 months, at 2-8°C for up to 1 week.  
Avoid repeated freeze/thaw cycles.

## Contact

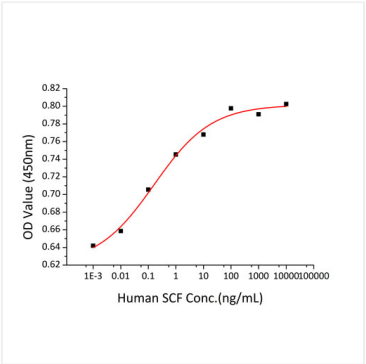


[www.abclonal.com](http://www.abclonal.com)

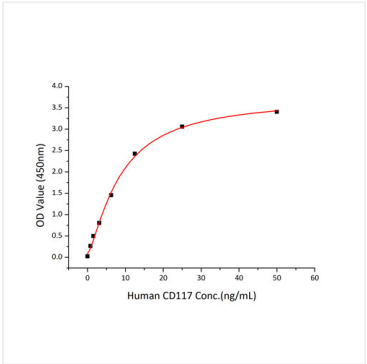
Validation Data



Recombinant Human c-Kit ligand/KITLG/SCF Protein was determined by SDS-PAGE under reducing conditions with Coomassie Blue.



Recombinant Human SCF promotes the proliferation of TF-1 human erythroleukemic cells. The ED<sub>50</sub> for this effect is 0.08-0.3ng/mL.



Immobilized recombinant human SCF at 1 µg/mL (100 µL/well) can bind recombinant human CD117 with a linear range of 1-6 ng/mL.