

RP00201

Leader in Biomolecular Solutions for Life Science



# Recombinant Human IL-6 Protein

Catalog No.: RP00201

Recombinant

3 Publications

## Sequence Information

Species	Gene ID	Swiss Prot
HEK293 cells	3569	P05231

### Tags

C-His

### Synonyms

IL6;BSF-2;BSF2;CDF;HGF;HSF;IFN-beta-2;IFNB2;IL-6

## Product Information

### Source

HEK293 cells

### Purification

≥ 95 % as determined by SDS-PAGE.

### Endotoxin

< 0.1 EU/μg of the protein by LAL method.

### Formulation

Lyophilized from a 0.22 μm filtered solution of PBS, pH 7.4. Contact us for customized product form or formulation.

### Reconstitution

Centrifuge the vial before opening. Reconstitute to a concentration of 0.1-0.5 mg/mL in sterile distilled water. Avoid vortex or vigorously pipetting the protein. For long term storage, it is recommended to add a carrier protein or stabilizer (e.g. 0.1% BSA, 5% HSA, 10% FBS or 5% Trehalose), and aliquot the reconstituted protein solution to minimize free-thaw cycles.

## Background

Interleukin-6 (IL-6) is a multifunctional α-helical cytokine that regulates cell growth and differentiation of various tissues, which is known particularly for its role in the immune response and acute phase reactions. The encoded protein has been shown to be an endogenous pyrogen capable of inducing fever in people with autoimmune diseases or infections. The protein is primarily produced at sites of acute and chronic inflammation, where it is secreted into the serum and induces a transcriptional inflammatory response through interleukin 6 receptor, alpha. The functioning of this protein is implicated in a wide variety of inflammation-associated disease states, including susceptibility to diabetes mellitus and systemic juvenile rheumatoid arthritis.

## Basic Information

### Description

Recombinant Human IL-6 Protein is produced by HEK293 expression system. The target protein is expressed with sequence (Val30-Met212) of human IL6 (Accession #NP\_000591.1) fused with a 6×His tag at the C-terminus.

### Bio-Activity

1. Measured by its binding ability in a functional ELISA. Immobilized Human IL6R at 1 μg/mL (100 μL/well) can bind Human IL-6 with a linear range of 2-15 ng/mL. 2. Measured in a cell proliferation assay using TF-1 Human erythroleukemic cells. The ED<sub>50</sub> for this effect is 0.10-0.40 ng/mL. The specific activity of Recombinant Human IL-6 is >1.2 × 10<sup>8</sup> IU/mg, which is calibrated against the human IL-6 WHO International Standard (NIBSC code: 21/308).

### Storage

Store at -20°C. Store the lyophilized protein at -20°C to -80 °C up to 1 year from the date of receipt. After reconstitution, the protein solution is stable at -20°C for 3 months, at 2-8°C for up to 1 week. Avoid repeated freeze/thaw cycles.

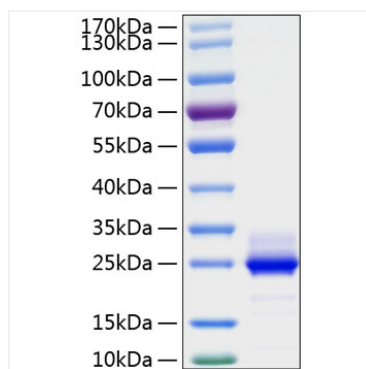
## Contact



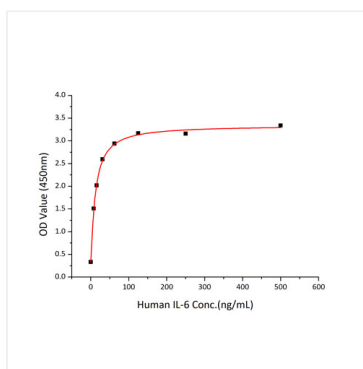
[www.abclonal.com](http://www.abclonal.com)

\* For your safety and health, please wear a lab coat and disposable gloves when handling.

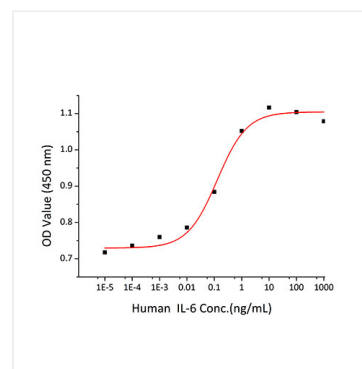
## Validation Data



Recombinant Human IL-6 Protein was determined by SDS-PAGE under reducing conditions with Coomassie Blue.



Immobilized Human IL6R at 1 µg/mL (100 µL/well) can bind Human IL-6 with a linear range of 2-15 ng/mL.



Measured in a cell proliferation assay using TF-1 Human erythroleukemic cells. The ED<sub>50</sub> for this effect is 0.10-0.40 ng/mL. The specific activity of Recombinant Human IL-6 is  $>1.2 \times 10^8$  IU/mg, which is calibrated against the human IL-6 WHO International Standard (NIBSC code: 21/308).