

RP00280

Leader in Biomolecular Solutions for Life Science



# Recombinant Human BTN1A1/Butyrophilin Protein

Catalog No.: RP00280

Recombinant

## Sequence Information

Species	Gene ID	Swiss Prot
HEK293 cells	696	Q13410

### Tags

C-hFc&His

### Synonyms

BTN1A1;BT;BTN;BTN1

## Product Information

Source	Purification
HEK293 cells	> 97% by SDS-PAGE.

### Endotoxin

< 1.0 EU/μg of the protein by LAL method.

### Formulation

Lyophilized from a 0.22 μm filtered solution of PBS, pH 7.4. Contact us for customized product form or formulation.

### Reconstitution

Centrifuge the vial before opening. Reconstitute to a concentration of 0.1-0.5 mg/mL in sterile distilled water. Avoid vortex or vigorously pipetting the protein. For long term storage, it is recommended to add a carrier protein or stabilizer (e.g. 0.1% BSA, 5% HSA, 10% FBS or 5% Trehalose), and aliquot the reconstituted protein solution to minimize free-thaw cycles.

## Background

## Basic Information

### Description

Recombinant Human BTN1A1/Butyrophilin Protein is produced by HEK293 expression system. The target protein is expressed with sequence (Ala 27 - Arg 242 ) of human BTN1A1/Butyrophilin (Accession #NP\_001723.2) fused with an Fc, 6×His tag at the C-terminus.

### Bio-Activity

Measured by its ability to inhibit Anti-CD3-induced proliferation of Jurkat Human acute T lymphocyte leukemia cells. The ED<sub>50</sub> for this effect is 0.13-0.52 ng/mL.

### Storage

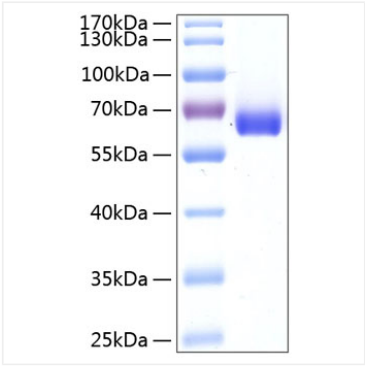
Store at -20°C. Store the lyophilized protein at -20°C to -80 °C up to 1 year from the date of receipt. After reconstitution, the protein solution is stable at -20°C for 3 months, at 2-8°C for up to 1 week. Avoid repeated freeze/thaw cycles.

## Contact

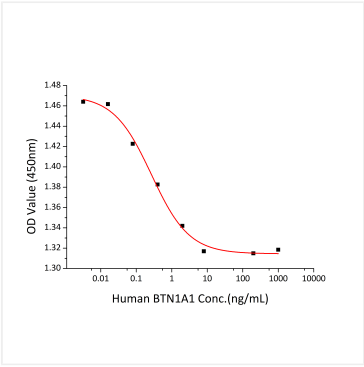


[www.abclonal.com](http://www.abclonal.com)

# Validation Data



Recombinant Human  
BTN1A1/Butyrophilin Protein was  
determined by SDS-PAGE with  
Coomassie Blue, showing a band at  
60-66 kDa.



Recombinant human BTN1A1 inhibits  
Anti-CD3-induced proliferation of  
Jurkat Human acute T lymphocyte  
leukemia cells. The ED<sub>50</sub> for this effect  
is 0.13-0.52 ng/mL.