

RP00388

Leader in Biomolecular Solutions for Life Science



# Recombinant Human IGF-II Protein

Catalog No.: RP00388

Recombinant

## Sequence Information

Species	Gene ID	Swiss Prot
<I>E. coli</I>	3481	P01344

### Tags

No tag

### Synonyms

IGF2;C11orf43;GRDF;IGF-II;PP9974

## Product Information

Source	Purification
<I>E. coli</I>	> 95% by SDS-PAGE.

### Endotoxin

< 1 EU/μg of the protein by LAL method.

### Formulation

Lyophilized from a 0.2 μm filtered solution of 5 mM Hac, pH 3.0. Contact us for customized product form or formulation.

### Reconstitution

Centrifuge the tube before opening. Reconstitute to a concentration of 0.1-0.5 mg/mL in sterile distilled water. Avoid vortex or vigorously pipetting the protein. For long term storage, it is recommended to add a carrier protein or stabilizer (e.g. 0.1% BSA, 5% HSA, 10% FBS or 5% Trehalose), and aliquot the reconstituted protein solution to minimize free-thaw cycles.

## Background

This protein belongs a member of the insulin family of polypeptide growth factors, which are involved in development and growth. It is an imprinted gene, expressed only from the paternal allele, and epigenetic changes at this locus are associated with Wilms tumour, Beckwith-Wiedemann syndrome, rhabdomyosarcoma, and Silver-Russell syndrome. A read-through INS-IGF2 gene exists, whose 5' region overlaps the INS gene and the 3' region overlaps this gene. Alternatively spliced transcript variants encoding different isoforms have been found for this gene.

## Basic Information

### Description

Recombinant Human IGF-II Protein is produced by <I>E. coli</I> expression system. The target protein is expressed with sequence (Ala25-Glu91) of human IGF2 (Accession #P01344).

### Bio-Activity

### Storage

Store the lyophilized protein at -20°C to -80 °C for long term. After reconstitution, the protein solution is stable at -20 °C for 3 months, at 2-8 °C for up to 1 week. Avoid repeated freeze/thaw cycles.

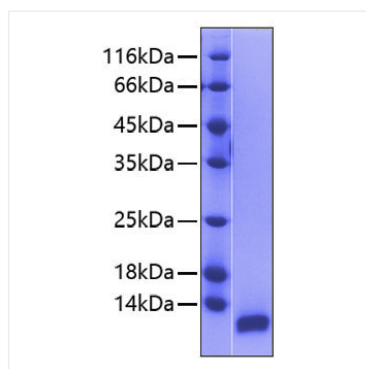
## Contact



[www.abclonal.com](http://www.abclonal.com)

## Validation Data

---



Recombinant protein Human IGF2 was determined by SDS-PAGE under reducing conditions with Coomassie Blue, showing a band at 7 kDa.