

RP00424

Leader in Biomolecular Solutions for Life Science



Recombinant Human Siglec-4a/MAG Protein

Catalog No.: RP00424

Recombinant

Sequence Information

Species	Gene ID	Swiss Prot
HEK293 cells	4099	P20916

Tags

C-His

Synonyms

GMA; S-MAG; SIGLEC-4A; SIGLEC4A;
SPG75;MAG;S-
MAG;SIGLEC-4A;SIGLEC4A;SPG75

Product Information

Source

HEK293 cells

Purification

> 95% by SDS-
PAGE.

Endotoxin

< 1 EU/μg of the protein by LAL
method.

Formulation

Lyophilized from a 0.2 μm filtered
solution of 20 mM PB, 150 mM NaCl,
pH7.2. Contact us for customized
product form or formulation.

Reconstitution

Centrifuge the tube before opening.
Reconstitute to a concentration of
0.1-0.5 mg/mL in sterile distilled water.
Avoid vortex or vigorously pipetting
the protein. For long term storage, it is
recommended to add a carrier protein
or stabilizer (e.g. 0.1% BSA, 5% HSA,
10% FBS or 5% Trehalose), and aliquot
the reconstituted protein solution to
minimize free-thaw cycles.

Background

This protein is a type I membrane protein and member of the immunoglobulin superfamily. It is thought to be involved in the process of myelination. It is a lectin that binds to sialylated glycoconjugates and mediates certain myelin-neuron cell-cell interactions. Three alternatively spliced transcripts encoding different isoforms have been described for this gene.

Basic Information

Description

Recombinant Human Siglec-4a/MAG Protein is produced by Human Cell expression system. The target protein is expressed with sequence (Gly20-Pro516) of human MAG/Siglec-4a (Accession #P20916) fused with a 6×His tag at the C-terminus.

Bio-Activity

Storage

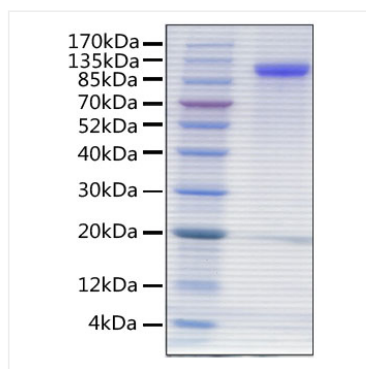
Store at -20°C. Store the lyophilized protein at -20°C to -80 °C up to 1 year from the date of receipt. After reconstitution, the protein solution is stable at -20°C for 3 months, at 2-8°C for up to 1 week.
Avoid repeated freeze/thaw cycles.

Contact



www.abclonal.com

Validation Data



Recombinant protein Human
MAG/Siglec-4a was determined by
SDS-PAGE under reducing conditions
with Coomassie Blue, showing a
band at 115 kDa.