

RP00467

Leader in Biomolecular Solutions for Life Science



Recombinant Human TNFSF4/OX40 ligand/CD252 Protein

Catalog No.: RP00467 **Recombinant**

Sequence Information

Species	Gene ID	Swiss Prot
HEK293 cells	7292	P23510

Tags

N-His

Synonyms

CD134L;CD252;GP34;OX-40L;OX40L;T
NLG2B;TXGP1;TNFSF4

Product Information

Source	Purification
HEK293 cells	> 95% by SDS- PAGE.

Endotoxin

< 0.01 EU/μg

Formulation

Lyophilized from a 0.22 μm filtered
solution of PBS, pH 7.4.

Reconstitution

Centrifuge the tube before opening.
Reconstitute to a concentration of
0.1-0.5 mg/mL in sterile distilled water.
Avoid vortex or vigorously pipetting
the protein. For long term storage, it is
recommended to add a carrier protein
or stabilizer (e.g. 0.1% BSA, 5% HSA,
10% FBS or 5% Trehalose), and aliquot
the reconstituted protein solution to
minimize free-thaw cycles.

Background

This protein belongs a cytokine of the tumor necrosis factor (TNF) ligand family. The encoded protein functions in T cell antigen-presenting cell (APC) interactions and mediates adhesion of activated T cells to endothelial cells. Polymorphisms in this gene have been associated with Sjogren's syndrome and systemic lupus erythematosus. Alternative splicing results in multiple transcript variants.

Basic Information

Description

Recombinant Human TNFSF4/OX40 ligand/CD252 Protein is produced by Human cell expression system. The target protein is expressed with sequence (Gln51-Leu183) of human OX40 Ligand/TNFSF4/OX40L/CD252 (Accession #P23510) fused with a 6×His tag at the N-terminus.

Bio-Activity

Storage

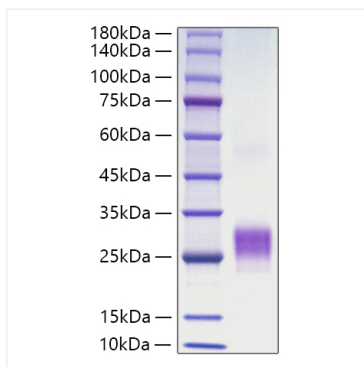
Store at -20°C. Store the lyophilized protein at -20°C to -80 °C up to 1 year from the date of receipt. After reconstitution, the protein solution is stable at -20°C for 3 months, at 2-8°C for up to 1 week. Avoid repeated freeze/thaw cycles.

Contact



www.abclonal.com

Validation Data



Recombinant protein Human OX40 Ligand/TNFSF4/OX40L/CD252 was determined by SDS-PAGE with Coomassie Blue, showing a band at 25-35 kDa.