

RP00599

Leader in Biomolecular Solutions for Life Science



# Recombinant Human CD3 epsilon/CD3E Protein

Catalog No.: RP00599

Recombinant

## Sequence Information

Species	Gene ID	Swiss Prot
HEK293 cells	916	P07766

### Tags

C-His

### Synonyms

CD3ε; CD3E; T3E; FLJ18683; TCRE;  
CD3-epsilon; IMD18

## Product Information

Source	Purification
HEK293 cells	> 95% by SDS-PAGE

### Endotoxin

< 1 EU/μg of the protein by LAL method

### Formulation

Lyophilized from 0.22 μm filtered solution in PBS (pH 7.4). Normally 8% trehalose is added as protectant before lyophilization.

### Reconstitution

Centrifuge the vial before opening. Reconstitute to a concentration of 0.1-0.5 mg/mL in sterile distilled water. Avoid vortex or vigorously pipetting the protein. For long term storage, it is recommended to add a carrier protein or stabilizer (e.g. 0.1% BSA, 5% HSA, 10% FBS or 5% Trehalose), and aliquot the reconstituted protein solution to minimize free-thaw cycles.

## Background

CD3E, is a single-pass type I membrane protein. CD3 (cluster of differentiation 3) T cell co-receptor helps to activate both the cytotoxic T cell (CD8 naive T cells) and also T helper cells (CD4 naive T cells). It consists of a protein complex and is composed of four distinct chains. In mammals, the complex contains a CD3γ chain, a CD3δ chain, and two CD3ε chains.

## Basic Information

### Description

Recombinant Human CD3E/CD3 epsilon Protein is produced by HEK293 cells expression system. The target protein is expressed with sequence (Asp23-Asp126) of Human CD3E/CD3 epsilon (Accession #P07766) fused with a C-His tag at the C-terminus.

### Bio-Activity

### Storage

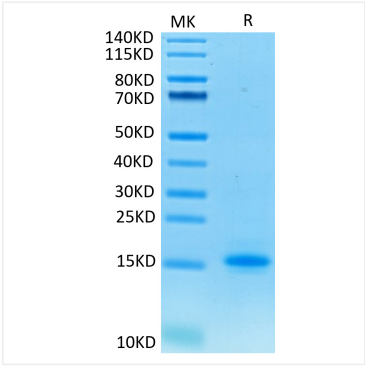
Store at -20°C. Store the lyophilized protein at -20°C to -80 °C up to 1 year from the date of receipt. After reconstitution, the protein solution is stable at -20°C for 3 months, at 2-8°C for up to 1 week. Avoid repeated freeze/thaw cycles.

## Contact

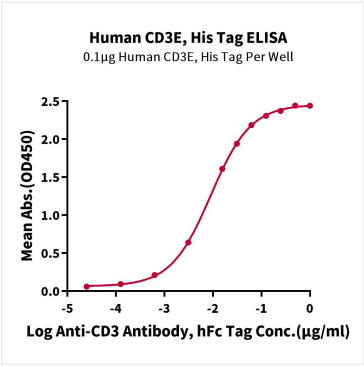


[www.abclonal.com](http://www.abclonal.com)

\* For your safety and health, please wear a lab coat and disposable gloves when handling.



Human CD3E on Tris-Bis PAGE under reduced condition. The purity is greater than 95%.



Immobilized Human CD3E, His Tag at 1 µg/mL (100 µL/well) on the plate. Dose response curve for Anti-CD3 Antibody, hFc Tag with the EC<sub>50</sub> of 9.0ng/mL determined by ELISA.