

RP00996

Leader in Biomolecular Solutions for Life Science



Recombinant Human IGF-I Protein

Catalog No.: RP00996

Recombinant

1 Publications

Sequence Information

Species	Gene ID	Swiss Prot
HEK293 cells	3479	P05019-1

Tags

C-hFc&His

Synonyms

IGF1;IGF-I;IGFI;MGF; IGFI; MGF

Product Information

Source	Purification
HEK293 cells	> 87% by SDS-PAGE.

Endotoxin

< 0.1 EU/μg of the protein by LAL method.

Formulation

Lyophilized from a 0.22 μm filtered solution of PBS, pH 7.4. Contact us for customized product form or formulation.

Reconstitution

Centrifuge the vial before opening. Reconstitute to a concentration of 0.1-0.5 mg/mL in sterile distilled water. Avoid vortex or vigorously pipetting the protein. For long term storage, it is recommended to add a carrier protein or stabilizer (e.g. 0.1% BSA, 5% HSA, 10% FBS or 5% Trehalose), and aliquot the reconstituted protein solution to minimize free-thaw cycles.

Background

Basic Information

Description

Recombinant Human IGF-I Protein is produced by HEK293 cells expression system. The target protein is expressed with sequence (Gly 49 - Ala 118) of human IGF1 (Accession #NP_001104755.1) fused with an Fc, 6×His tag at the C-terminus.

Bio-Activity

1. Measured by its ability to stimulate p70 S6 Kinase(Thr389) and p85 S6 Kinase(Thr412) autophosphorylation in 293T human embryonic kidney cells. 0.01-1 ng/mL of Recombinant Human IGF1 can effectively enhance p70 S6 Kinase(Thr389) and p85 S6 Kinase(Thr412) autophosphorylation. 2. Measured by its binding ability in a functional ELISA. Immobilized recombinant human IGF1 at 1 μg/mL (100 μL/well) can bind recombinant human IGF1 with a linear range of 30-250 ng/mL. 3. Measured in a cell proliferation assay using MCF-7 cells. The ED₅₀ for this effect is typically 7.5-30 ng/mL, corresponding to a specific activity of 3.33×10⁴-1.33×10⁵ units/mg.

Storage

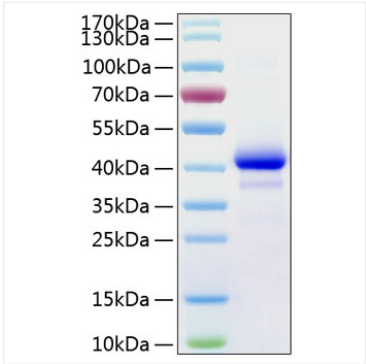
Store at -20°C. Store the lyophilized protein at -20°C to -80 °C up to 1 year from the date of receipt. After reconstitution, the protein solution is stable at -20°C for 3 months, at 2-8°C for up to 1 week. Avoid repeated freeze/thaw cycles.

Contact

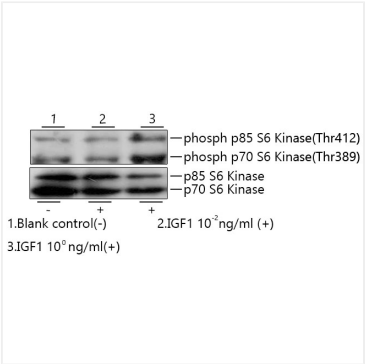


www.abclonal.com

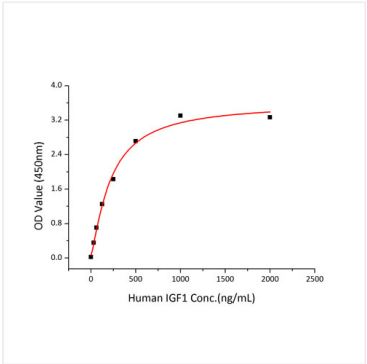
Validation Data



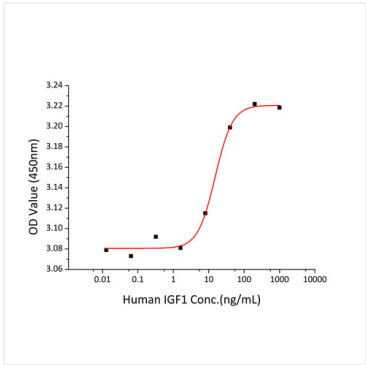
Recombinant Human IGF-I Protein was determined by SDS-PAGE under reducing conditions with Coomassie Blue.



Recombinant Human IGF1 enhances p70S6 Kinase(Thr389) and p85 S6 Kinase(Thr412) autophosphorylation in 293T human embryonic kidney cells. 0.01-1ng/mL of Recombinant Human IGF1 can effectively enhance p70S6 Kinase(Thr389) and p85 S6 Kinase(Thr412) autophosphorylation.



Measured by its binding ability in a functional ELISA. Immobilized recombinant human IGFBP6 at 1µg/mL (100 µL/well) can bind recombinant human IGF1 with a linear range of 30-250ng/mL.



Recombinant Human IGF1 promotes the proliferation of MCF-7 cells. The ED₅₀ for this effect is typically 7.5-30 ng/mL.