

RP01077

Leader in Biomolecular Solutions for Life Science



Recombinant Mouse E-selectin/SELE/CD62E Protein

Catalog No.: RP01077

Recombinant

1 Publications

Sequence Information

Species	Gene ID	Swiss Prot
HEK293 cells	20339	Q00690

Tags

C-hFc&His

Synonyms

CD62E;ELAM1;ELAM1;ESEL;LECAM2;E-selectin;SELE

Product Information

Source	Purification
HEK293 cells	> 95% by SDS-PAGE.

Endotoxin

< 0.1 EU/μg of the protein by LAL method.

Formulation

Lyophilized from a 0.22 μm filtered solution of PBS, pH 7.4. Contact us for customized product form or formulation.

Reconstitution

Centrifuge the vial before opening. Reconstitute to a concentration of 0.1-0.5 mg/mL in sterile distilled water. Avoid vortex or vigorously pipetting the protein. For long term storage, it is recommended to add a carrier protein or stabilizer (e.g. 0.1% BSA, 5% HSA, 10% FBS or 5% Trehalose), and aliquot the reconstituted protein solution to minimize free-thaw cycles.

Background

Basic Information

Description

Recombinant Mouse E-selectin/SELE/CD62E Protein is produced by HEK293 cells expression system. The target protein is expressed with sequence (Trp22-Pro557) of mouse E-Selectin/CD62E (Accession #NP_035475.1) fused with an Fc, 6×His tag at the C-terminus.

Bio-Activity

Measured by the ability of the immobilized protein to support the adhesion of U937 human histiocytic lymphoma cells. When 5 x 10⁴ cells/well are added to mouse E-Selectin coated plates (2 μg/mL with 100 μL/well), approximately 80%-90% cells will adhere for 1 hour incubation at 37°C.

Storage

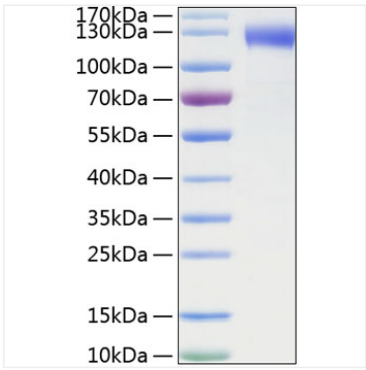
Store at -20°C. Store the lyophilized protein at -20°C to -80 °C up to 1 year from the date of receipt. After reconstitution, the protein solution is stable at -20°C for 3 months, at 2-8°C for up to 1 week. Avoid repeated freeze/thaw cycles.

Contact



www.abclonal.com

Validation Data



Recombinant Mouse SELE/E-selectin/CD62E Protein was determined by SDS-PAGE with Coomassie Blue, showing a band at 110-130 kDa.