

RP01239

Leader in Biomolecular Solutions for Life Science



# Recombinant Human GTPase KRas/KRAS(G12V) Protein

Catalog No.: RP01239 **Recombinant**

## Sequence Information

Species	Gene ID	Swiss Prot
<I>E. coli</I>	3845	P01116

### Tags

N-His

### Synonyms

KRAS; C-K-RAS; CFC2; K-RAS2A; K-RAS2B; K-RAS4A; K-RAS4B; KI-RAS; KRAS1; KRAS2; NS; NS3; RALD; RASK2; c-Ki-ras2; GTPase KRas;C-K-RAS;CFC2;K-RAS2A;K-RAS2B;K-RAS4A;K-RAS4B;KI-RAS;KRAS1;KRAS2;NS;NS3;RALD;RASK2;c-Ki-ras2

## Product Information

Source	Purification
<I>E. coli</I>	> 85% by SDS-PAGE.

### Endotoxin

< 1.0 EU/μg of the protein by LAL method.

### Formulation

Lyophilized from a 0.22 μm filtered solution of PBS, pH 7.4. Contact us for customized product form or formulation.

### Reconstitution

Centrifuge the vial before opening. Reconstitute to a concentration of 0.1-0.5 mg/mL in sterile distilled water. Avoid vortex or vigorously pipetting the protein. For long term storage, it is recommended to add a carrier protein or stabilizer (e.g. 0.1% BSA, 5% HSA, 10% FBS or 5% Trehalose), and aliquot the reconstituted protein solution to minimize free-thaw cycles.

## Background

### Basic Information

#### Description

Recombinant Human GTPase KRas/KRAS(G12V) Protein is produced by <I>E. coli</I> expression system. The target protein is expressed with sequence (Thr2-Cys186(Gly12Val)) of human GTPase KRas/KRAS (Accession #NP\_203524.1) fused with a 6×His tag at the N-terminus.

#### Bio-Activity


Measured by its binding ability in a functional ELISA. Immobilized Recombinant Human KRAS, His Tag at 2 μg/mL (100 μL/well) can bind Anti-KRAS Ab with a linear range of 42-84.56 ng/mL.

#### Storage

Store at -20°C. Store the lyophilized protein at -20°C to -80 °C up to 1 year from the date of receipt. After reconstitution, the protein solution is stable at -20°C for 3 months, at 2-8°C for up to 1 week. Avoid repeated freeze/thaw cycles.

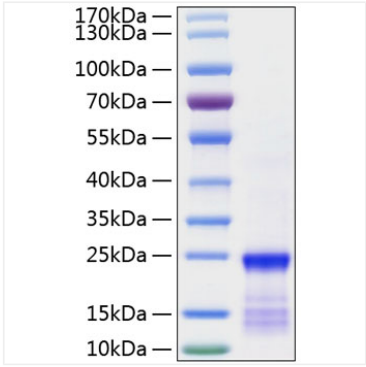
Contact

---

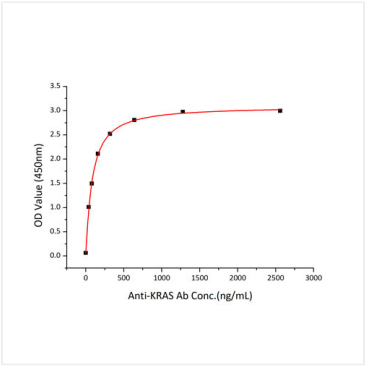
 [www.abclonal.com](http://www.abclonal.com)

---

# Validation Data



Recombinant Human GTPase KRas/KRAS(G12V) Protein was determined by SDS-PAGE with Coomassie Blue, showing a band at 24 kDa.



Immobilized Recombinant Human KRAS, His Tag at 2µg/mL (100 µL/well) can bind Anti-KRAS Ab with a linear range of 42-84.56ng/mL.