

RP01373

Leader in Biomolecular Solutions for Life Science



Recombinant Mouse IL-15RA/CD215 Protein

Catalog No.: RP01373

Recombinant

Sequence Information

Species	Gene ID	Swiss Prot
HEK293 cells	16169	Q60819-1

Tags

C-hFc&His

Synonyms

IL-15RA;CD215;AA690181;IL15RA

Product Information

Source	Purification
HEK293 cells	> 95% by SDS-PAGE.

Endotoxin

<0.1EU/μg

Formulation

Lyophilized from a 0.22 μm filtered solution of PBS, pH 7.4.

Reconstitution

Centrifuge the vial before opening. Reconstitute to a concentration of 0.1-0.5 mg/mL in sterile distilled water. Avoid vortex or vigorously pipetting the protein. For long term storage, it is recommended to add a carrier protein or stabilizer (e.g. 0.1% BSA, 5% HSA, 10% FBS or 5% Trehalose), and aliquot the reconstituted protein solution to minimize free-thaw cycles.

Contact



www.abclonal.com

Background

Mouse interleukin-15 receptor subunit alpha, also known as IL15ra, is a high-affinity receptor for interleukin-15. IL15ra associates as a heterotrimer with the IL-2 receptor beta and gamma subunits (Common gamma chain, orgamma c) to initiate signal transduction. It can signal both in cis and trans where IL15R from one subset of cells presents IL15 to neighboring IL2RG-expressing cells. IL15ra is expressed in special cells including a wide variety of T and B cells and non-lymphoid cells. Human IL15ra shares 45% amino acid sequence homology with the mouse form of the receptor. Eight isoforms of IL-15 R alpha mRNA have been identified, resulting from alternative splicing events involving different exons.

Basic Information

Description

Recombinant Mouse IL-15RA/CD215 Protein is produced by HEK293 cells expression system. The target protein is expressed with sequence (Gly33-Lys205) of mouse IL15RA/CD215 (Accession #NP_032384.1) fused with a Fc, 6×His tag at the C-terminus.

Bio-Activity

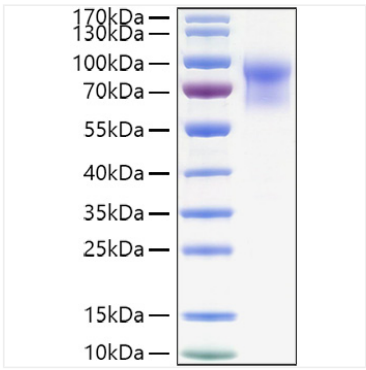
Measured by its binding ability in a functional ELISA. Immobilized Human IL15 at 1 μg/mL (100 μL/well) can bind Mouse IL15RA with a linear range of 0.3-77 ng/mL.

Storage

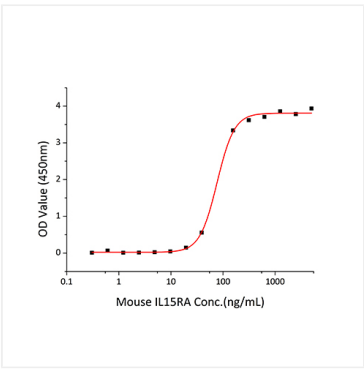
Store at -20°C. Store the lyophilized protein at -20°C to -80 °C up to 1 year from the date of receipt. After reconstitution, the protein solution is stable at -20°C for 3 months, at 2-8°C for up to 1 week. Avoid repeated freeze/thaw cycles.

* For your safety and health, please wear a lab coat and disposable gloves when handling.

Validation Data



Recombinant Mouse IL-15RA/CD215 Protein was determined by SDS-PAGE with Coomassie Blue, showing a band at 70-90kDa.



Immobilized Human IL15 at 1 µg/mL (100 µL/well) can bind Mouse IL15RA with a linear range of 0.3-77 ng/mL.