

RP01539

Leader in Biomolecular Solutions for Life Science



Recombinant Human CDCP1/gp140/CD318 Protein

Catalog No.: RP01539

Recombinant

Sequence Information

Species	Gene ID	Swiss Prot
HEK293 cells	64866	Q9H5V8-1

Tags

C-hFc

Synonyms

CD318; TRASK;
SIMA135;CDCP1;SIMA135;TRASK

Product Information

Source	Purification
HEK293 cells	> 95% by SDS-PAGE.

Endotoxin

<0.1EU/μg

Formulation

Lyophilized from a 0.22 μm filtered solution of PBS, pH 7.4.

Reconstitution

Centrifuge the vial before opening. Reconstitute to a concentration of 0.1-0.5 mg/mL in sterile distilled water. Avoid vortex or vigorously pipetting the protein. For long term storage, it is recommended to add a carrier protein or stabilizer (e.g. 0.1% BSA, 5% HSA, 10% FBS or 5% Trehalose), and aliquot the reconstituted protein solution to minimize free-thaw cycles.

Background

CDCP1 contains three extracellular CUB domains. It is a putative stem cell marker that is highly expressed in some human cancer cells and both, typical and atypical (cancerous) colons. It interacts with CDH2/N-cadherin, CDH3/P-cadherin, SDC1/syndecan-1, SDC4/syndecan-4 and the serine protease ST14/MT-SP1. It also interacts with SRC and PRKCG/protein kinase C gamma. CDCP1 is taken as a key regulator of EGF/EGFR-induced cell migration. It has been shown that signaling via EGF/EGFR induces migration of ovarian cancer Caov3 and OVCA420 cells with concomitant up-regulation of CDCP1 mRNA and protein. Consistent with a role in cell migration CDCP1 relocates from cell-cell junctions to punctate structures on filopodia after activation of EGFR. It may be involved in cell adhesion and cell matrix association. It also may play a role in the regulation of anchorage versus migration or proliferation versus differentiation via its phosphorylation. It has been taken as a novel marker for leukemia diagnosis and immature hematopoietic stem cell subsets.

Basic Information

Description

Recombinant Human CDCP1/gp140/CD318 Protein is produced by HEK293 cells expression system. The target protein is expressed with sequence (Phe30-Leu666) of human gp140/CDCP1/CD318 (Accession #NP_073753.3) fused with a hFc tag at the C-terminus.

Bio-Activity

Measured by its binding ability in a functional ELISA. Immobilized Human CDH3 (Catalog #RP01491) at 5 μg/mL (100 μL/well) can bind Human CDCP1 (Catalog #RP01539) with a linear range of 0.37-3.05 μg/mL.

Storage

Store at -20°C. Store the lyophilized protein at -20°C to -80 °C up to 1 year from the date of receipt. After reconstitution, the protein solution is stable at -20°C for 3 months, at 2-8°C for up to 1 week. Avoid repeated freeze/thaw cycles.

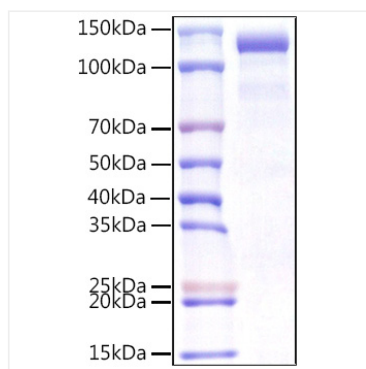
Contact



www.abclonal.com

* For your safety and health, please wear a lab coat and disposable gloves when handling.

Validation Data



Recombinant Human
CDCP1/gp140/CD318 Protein was
determined by SDS-PAGE under
reducing conditions with Coomassie
Blue.