

RP01587

Leader in Biomolecular Solutions for Life Science



Recombinant Human Parathormone/PTH Protein

Catalog No.: RP01587

Recombinant

Sequence Information

Species	Gene ID	Swiss Prot
<I>E. coli</I>	5741	P01270

Tags

No tag

Synonyms

PTH; PTH1; parathyroid hormone;PTH1

Background

Parathyroid hormone is the most important endocrine regulator of calcium and phosphorus concentration in extracellular fluid. This hormone is secreted from cells of the parathyroid glands and finds its major target cells in bone and kidney. Another hormone, parathyroid hormone-related protein, binds to the same receptor as parathyroid hormone and has major effects on development. Like most other protein hormones, parathyroid hormone is synthesized as a preprohormone. After intracellular processing, the mature hormone is packaged within the Golgi into secretory vesicles, then secreted into blood by exocytosis. Parathyroid hormone is secreted as a linear protein of 84 amino acids.

Product Information

Source

<I>E. coli</I>

Purification

> 95% by SDS-PAGE.

Endotoxin

<0.1 EU/μg

Formulation

Lyophilized from a 0.22 μm filtered solution of PBS, pH 7.4.

Reconstitution

Centrifuge the vial before opening. Reconstitute to a concentration of 0.1-0.5 mg/mL in sterile distilled water. Avoid vortex or vigorously pipetting the protein. For long term storage, it is recommended to add a carrier protein or stabilizer (e.g. 0.1% BSA, 5% HSA, 10% FBS or 5% Trehalose), and aliquot the reconstituted protein solution to minimize freeze-thaw cycles.

Basic Information

Description

Recombinant Human Parathormone/PTH Protein is produced by *E. coli* expression system. The target protein is expressed with sequence (Ser32-Gln115) of human Parathormone/PTH (Accession #NP_000306.1) fused with no additional amino acid.

Bio-Activity

Storage

Store at -20°C. Store the lyophilized protein at -20°C to -80 °C up to 1 year from the date of receipt.

After reconstitution, the protein solution is stable at -20°C for 3 months, at 2-8°C for up to 1 week.

Avoid repeated freeze/thaw cycles.

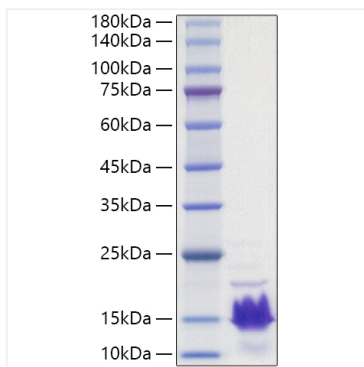
Contact



www.abclonal.com

* For your safety and health, please wear a lab coat and disposable gloves when handling.

Validation Data



Recombinant Human
Parathormone/PTH Protein was
determined by SDS-PAGE with
Coomassie Blue, showing a band at
14-18 kDa.