

RP02017

Leader in Biomolecular Solutions for Life Science



# Recombinant Human B7-H1/PD-L1/CD274 Protein

Catalog No.: RP02017

Recombinant

## Sequence Information

Species	Gene ID	Swiss Prot
HEK293 cells	29126	Q9NZQ7

### Tags

C-His

### Synonyms

B7-H; B7H1; PDL1; PD-L1; hPD-L1; PDCD1L1; PDCD1LG1;CD274;PDL1;B7H1;PD-L1;PDCD1L1;PDCD1LG1; B7-H; CD274 molecule

## Product Information

Source	Purification
HEK293 cells	> 95% by SDS-PAGE.

### Endotoxin

< 0.1 EU/μg of the protein by LAL method.

### Formulation

Lyophilized from a 0.2 μm filtered solution of PBS, pH 7.4. Contact us for customized product form or formulation.

### Reconstitution

Centrifuge the tube before opening. Reconstitute to a concentration of 0.1-0.5 mg/mL in sterile distilled water. Avoid vortex or vigorously pipetting the protein. For long term storage, it is recommended to add a carrier protein or stabilizer (e.g. 0.1% BSA, 5% HSA, 10% FBS or 5% Trehalose), and aliquot the reconstituted protein solution to minimize free-thaw cycles.

## Background

B7-H1, also known as PD-L1 and CD274, is an approximately 65 kDa transmembrane glycoprotein in the B7 family of immune regulatory molecules. PD-L1 has been identified as the ligand for the immunoinhibitory receptor programmed death-1 (PD1/PDCD1) and has been demonstrated to play a role in the regulation of immune responses and peripheral tolerance.

## Basic Information

### Description

Recombinant Human 4-1BB/CD137 Protein is produced by mammalian expression system. The target protein is expressed with sequence (Phe19-Arg238) of human PD-L1 (Accession #Q9NZQ7) fused with a 6xHis tag at the C-terminus.

### Bio-Activity

Immobilized Human PD-L1 at 0.5 μg/mL (100 μL/well), dose response curve for Anti PD-L1 Ab with the EC<sub>50</sub> of 8.2 ng/mL determined by ELISA.

### Storage

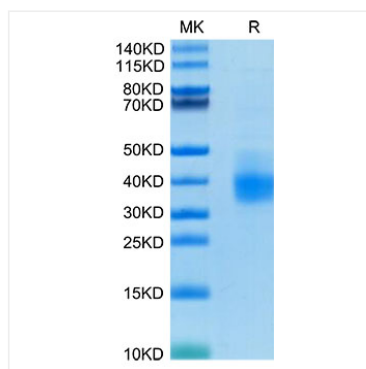
Store the lyophilized protein at -20°C to -80 °C for long term. After reconstitution, the protein solution is stable at -20 °C for 3 months, at 2-8 °C for up to 1 week. Avoid repeated freeze/thaw cycles.

## Contact

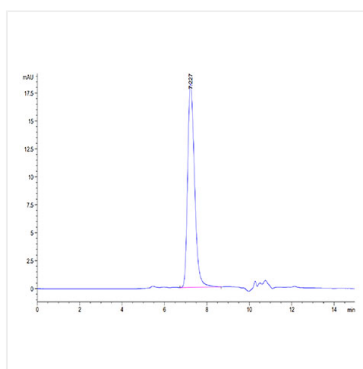


[www.abclonal.com](http://www.abclonal.com)

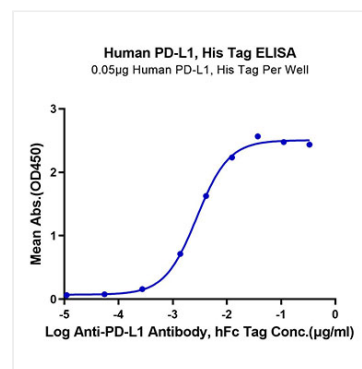
## Validation Data



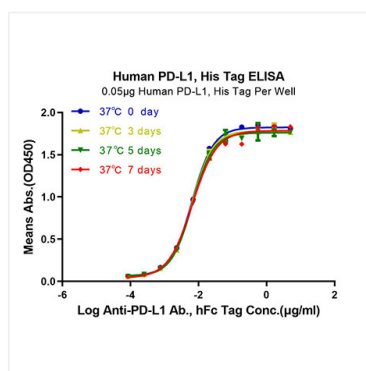
Human PD-L1 on Tris-Bis PAGE under reduced condition. The purity is greater than 95%.



The purity of Human PD-L1 is greater than 95% as determined by SEC-HPLC.



Immobilized Human PD-L1, His Tag at 0.5μg/ml (100μl/well) on the plate. Dose response curve for Anti-PD-L1 Antibody, hFc Tag with the EC<sub>50</sub> of 6.4ng/ml determined by ELISA.



Immobilized Human PD-L1, His Tag at 0.5μg/ml (100μl/Well). Dose response curve for Anti-PD-L1 Ab., hFc Tag with the EC<sub>50</sub> of 6.4/6.4/6.5/6.6ng/ml determined by ELISA.