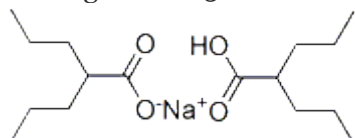


Product Data Sheet

Divalproex sodium

Catalog No. A10321



Divalproex sodium consists of a compound of sodium valproate and valproic acid in a 1:1 molar relationship in an enteric coated form. It is used in the United Kingdom, Canada, and United States for the treatment of the manic episodes of bipolar disorder.

Technical details

CATALOG NUM	A10321
M. WT	310.41
FORMULA	C ₈ H ₁₆ O ₂ .C ₈ H ₁₅ O ₂ .Na
PURITY	>98%
STORAGE	at -20°C 3 years Powder
CAS NO.	76584-70-8
SYNONYMS	Valproate semisodium
SMILES	CCCC(CCC)C(=O)O.CCCC(CCC)C(=O)[O-].[Na+]

Biological Activity

Divalproex sodium consists of a compound of sodium valproate and valproic acid in a 1:1 molar relationship in an enteric coated form. It is used in the United Kingdom, Canada, and United States for the treatment of the manic episodes of bipolar disorder.

Targets

--	--	--	--	--

Solubility *

In vitro	DMSO	62 mg/mL (19
	Water	62 mg/mL (19
	Ethanol	62 mg/mL (19

* <1 mg/ml means slightly soluble or insoluble.

* Please note that Adooq tests the solubility of all compounds in-house, and the actual solubility may differ published values. This is normal and is due to slight batch-to-batch variations.

Preparing Stock Solutions

Concentration / Solvent Volume / Mass	1 mg	5 mg
0.1 mM	32.22 mL	161.08 mL
0.5 mM	6.44 mL	32.22 mL
1 mM	3.22 mL	16.11 mL
5 mM	0.64 mL	3.22 mL

*The above data is based on the productmolecular weight 310.41. Batch specific molecular weights may vary from batch to batch due to solvent of hydration, which will affect the solvent volumes required to prepare stock solutions.