

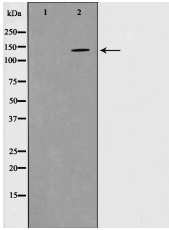
Phospho-PYK2(Tyr580) Ab

Cat.#: AF0020
Size: 100ul,200ul

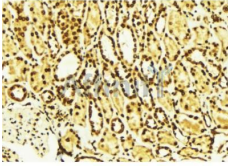
Concn.: 1mg/ml
Source: Rabbit

Mol.Wt.: 135kDa
Clonality: Polyclonal

Application:	WB 1:500-1:2000 IHC 1:50-1:200
Reactivity:	Human,Mouse,Rat
Purification:	The Ab is from purified rabbit serum by affinity purification via sequential chromatography on phospho- and non-phospho-peptide affinity columns.
Specificity:	Phospho-PYK2(Tyr580) Ab detects endogenous levels of PYK2 only when phosphorylated at Tyrosine 580.
Immunogen:	A synthesized peptide derived from human PYK2 around the phosphorylation site of Tyrosine 580.
Uniprot:	Q14289
Description:	Pyk2 a nonreceptor tyrosine kinase of the Fak family. Predominantly expressed in the cells derived from hematopoietic lineages and in the central nervous system. Pyk2 is one of the signaling mediators for G-protein-coupled receptors. Involved in calcium induced regulation of ion channel and activation of the map kinase signaling pathway. Interacts with the SH2 domain of Grb2.
Subcellular Location:	Cytoplasm. Cell membrane. Interaction with nephrocystin induces the membrane-association of the kinase.
Tissue Specificity:	Most abundant in the brain, with highest levels in amygdala and hippocampus. Low levels in kidney (at protein level). Also expressed in spleen and lymphocytes.
Similarity:	Belongs to the protein kinase superfamily. Tyr protein kinase family. FAK subfamily.
Storage Condition and Buffer:	Rabbit IgG in phosphate buffered saline , pH 7.4, 150mM NaCl, 0.02% sodium azide and 50% glycerol.Store at -20 °C.Stable for 12 months from date of receipt.



Western blot analysis on mouse brain cell lysate using Phospho-PYK2(Tyr580) Ab. The lane on the left is treated with the antigen-specific peptide.



AF0020 at 1/100 staining Mouse kidney tissue by IHC-P. The sample was formaldehyde fixed and a heat mediated antigen retrieval step in citrate buffer was performed. The sample was then blocked and incubated with the Ab for 1.5 hours at 22°C. An HRP conjugated goat anti-rabbit Ab was used as the secondary.

IMPORTANT: For western blot, incubate membrane with diluted primary Ab in 5% w/v milk, 1X TBS, 0.1% Tween@20 at 4°C with gentle shaking, overnight.

For Research Use Only. Not for use in diagnostic and therapeutic procedures. Not for resale without express authorization.