

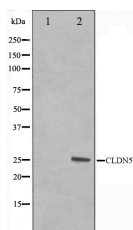
Claudin 5 Ab

Cat.#: AF0130
Size: 100ul,200ul

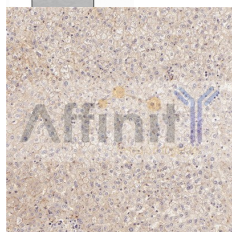
Concn.: 1mg/ml
Source: Rabbit

Mol.Wt.: 23kDa
Clonality: Polyclonal

Application:	WB: 1:500~1:3000 IHC: 1:50~1:200 IF 1:200
Reactivity:	Human,Mouse,Rat
Purification:	The antiserum was purified by peptide affinity chromatography using SulfoLink™ Coupling Resin (Thermo Fisher Scientific).
Specificity:	Claudin 5 Ab detects endogenous levels of total Claudin 5.
Immunogen:	A synthesized peptide derived from human Claudin 5.
Uniprot:	O00501
Description:	claudin 5 Plays a major role in tight junction-specific obliteration of the intercellular space. Belongs to the claudin family. Directly interacts with TJP1/ZO-1, TJP2/ZO-2 and TJP3/ZO- 3. Interacts with MPDZ.
Subcellular Location:	Cell junction > tight junction. Cell membrane.
Similarity:	Belongs to the claudin family.
Storage Condition and Buffer:	Rabbit IgG in phosphate buffered saline , pH 7.4, 150mM NaCl, 0.02% sodium azide and 50% glycerol.Store at -20 °C.Stable for 12 months from date of receipt.



Western blot analysis on A549 cell lysate using Claudin 5 Ab,The lane on the left is treated with the antigen-specific peptide.



IHC analysis.



AF0130 staining A549 cells by IF/ICC. The sample were fixed with PFA and permeabilized in 0.1% Triton X-100, then blocked in 10% serum for 45 minutes at 25°C. The primary Ab was diluted at 1/200 and incubated with the sample for 1 hour at 37°C. An Alexa Fluor 594 conjugated goat anti-rabbit IgG (H+L) Ab (Cat.# S0006), diluted at 1/600, was used as secondary Ab.

IMPORTANT: For western blot, incubate membrane with diluted primary Ab in 5% w/v milk, 1X TBS, 0.1% Tween@20 at 4°C with gentle shaking, overnight.

For Research Use Only. Not for use in diagnostic and therapeutic procedures. Not for resale without express authorization.