

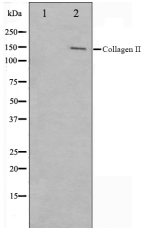
## Collagen II Ab

Cat.#: AF0135  
Size: 100ul,200ul

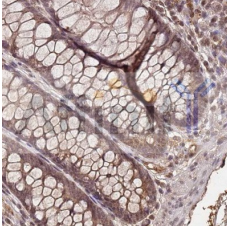
Concn.: 1mg/ml  
Source: Rabbit

Mol.Wt.: 140kDa  
Clonality: Polyclonal

Application:	WB: 1:500~1:3000 IHC: 1:50~1:200 IF/ICC: 1:100~1:500
Reactivity:	Human,Mouse,Rat
Purification:	The antiserum was purified by peptide affinity chromatography using SulfoLink™ Coupling Resin (Thermo Fisher Scientific).
Specificity:	Collagen II Ab detects endogenous levels of total Collagen II.
Immunogen:	A synthesized peptide derived from human Collagen II.
Uniprot:	P02458
Description:	COL2A1 Type II collagen is specific for cartilaginous tissues. It is essential for the normal embryonic development of the skeleton, for linear growth and for the ability of cartilage to resist compressive forces. Belongs to the fibrillar collagen family. Homotrimers of alpha 1(II) chains. 3 isoforms of the human protein are produced by alternative splicing
Subcellular Location:	Secreted > extracellular space > extracellular matrix.
Tissue Specificity:	Isoform 2 is highly expressed in juvenile chondrocyte and low in fetal chondrocyte.
Similarity:	The C-terminal propeptide, also known as COLFI domain, have crucial roles in tissue growth and repair by controlling both the intracellular assembly of procollagen molecules and the extracellular assembly of collagen fibrils. It binds a calcium ion which is essential for its function (By similarity).Belongs to the fibrillar collagen family.
Storage Condition and Buffer:	Rabbit IgG in phosphate buffered saline , pH 7.4, 150mM NaCl, 0.02% sodium azide and 50% glycerol.Store at -20 °C.Stable for 12 months from date of receipt.



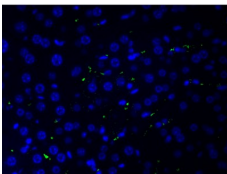
Western blot analysis on COLO205 cell lysate using Collagen II Ab. The lane on the left is treated with the antigen-specific peptide.



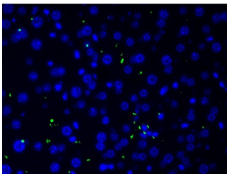
IHC analysis.



AF0135 staining COLO205 cells by IF/ICC. The sample were fixed with PFA and permeabilized in 0.1% Triton X-100, then blocked in 10% serum for 45 minutes at 25°C. The primary Ab was diluted at 1/200 and incubated with the sample for 1 hour at 37°C. An Alexa Fluor 594 conjugated goat anti-rabbit IgG (H+L) Ab (Cat.# S0006), diluted at 1/600, was used as secondary Ab.



AF0135 at 1/200 staining human liver tissue cells by ICC/IF. Cells were formaldehyde fixed, permeabilized by Triton X-100 and blocked 5% BSA for 30 minutes at room temperature. The sample was incubated with the primary Ab (1/200 in BSA) for 1 hour. An Alexa Fluor 488®-conjugated Goat anti-rabbit Ab was used as the secondary.



AF0135 at 1/200 staining human liver tissue cells by ICC/IF. Cells were formaldehyde fixed, permeabilized by Triton X-100 and blocked 5% BSA for 30 minutes at room temperature. The sample was incubated with the primary Ab (1/200 in BSA) for 1 hour. An Alexa Fluor 488®-conjugated Goat anti-rabbit Ab was used as the secondary.

**IMPORTANT:** For western blot, incubate membrane with diluted primary Ab in 5% w/v milk, 1X TBS, 0.1% Tween@20 at 4°C with gentle shaking, overnight.

For Research Use Only. Not for use in diagnostic and therapeutic procedures. Not for resale without express authorization.