

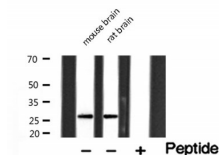
## Granzyme B Ab

Cat.#: AF0175  
Size: 100ul,200ul

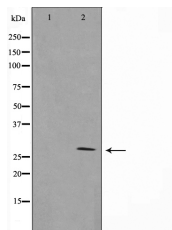
Concn.: 1mg/ml  
Source: Rabbit

Mol.Wt.: 28kDa  
Clonality: Polyclonal

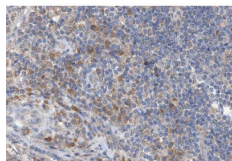
Application:	WB: 1:500~1:3000 IHC: 1:50~1:200, IF/ICC 1:100-1:500
Reactivity:	Human,Mouse,Rat
Purification:	The antiserum was purified by peptide affinity chromatography using SulfoLink™ Coupling Resin (Thermo Fisher Scientific).
Specificity:	Granzyme B Ab detects endogenous levels of total Granzyme B.
Immunogen:	A synthesized peptide derived from human Granzyme B.
Uniprot:	P10144/P20718
Description:	GZMB This enzyme is necessary for target cell lysis in cell-mediated immune responses. It cleaves after Asp. Seems to be linked to an activation cascade of caspases (aspartate-specific cysteine proteases) responsible for apoptosis execution. Cleaves caspase-3, -7, -9 and 10 to give rise to active enzymes mediating apoptosis. Belongs to the peptidase S1 family. Granzyme subfamily. Induced by staphylococcal enterotoxin A (SEA) in peripheral blood leukocytes.
Subcellular Location:	Cytoplasmic granule. Cytoplasmic granules of cytolytic T-lymphocytes and natural killer cells.
Tissue Specificity:	By staphylococcal enterotoxin A (SEA) in peripheral blood leukocytes.
Similarity:	Belongs to the peptidase S1 family. Granzyme subfamily.
Storage Condition and Buffer:	Rabbit IgG in phosphate buffered saline , pH 7.4, 150mM NaCl, 0.02% sodium azide and 50% glycerol.Store at -20 °C.Stable for 12 months from date of receipt.



Western blot analysis of extracts of various tissue sample, using Granzyme B Ab.



Western blot analysis on NIH-3T3 cell lysate using Granzyme B Ab. The lane on the left is treated with the antigen-specific peptide.



AF0175 at 1/100 staining human lymph node tissue sections by IHC-P. The tissue was formaldehyde fixed and a heat mediated antigen retrieval step in citrate buffer was performed. The tissue was then blocked and incubated with the Ab for 1.5 hours at 22°C. An HRP conjugated goat anti-rabbit Ab was used as the secondary.



AF0175 staining NIH-3T3 by IF/ICC. The sample were fixed with PFA and permeabilized in 0.1% Triton X-100, then blocked in 10% serum for 45 minutes at 25°C. The primary Ab was diluted at 1/200 and incubated with the sample for 1 hour at 37°C. An Alexa Fluor 594 conjugated goat anti-rabbit IgG (H+L) Ab, diluted at 1/600, was used as the secondary Ab.

**IMPORTANT:** For western blot, incubate membrane with diluted primary Ab in 5% w/v milk, 1X TBS, 0.1% Tween@20 at 4°C with gentle shaking, overnight.

For Research Use Only. Not for use in diagnostic and therapeutic procedures. Not for resale without express authorization.