

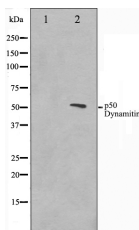
p50 Dynamitin Ab

Cat.#: AF0232
Size: 100ul,200ul

Concn.: 1mg/ml
Source: Rabbit

Mol.Wt.: 50kDa
Clonality: Polyclonal

Application:	WB: 1:500~1:3000, IF/ICC 1:100-1:500
Reactivity:	Human,Mouse,Rat
Purification:	The antiserum was purified by peptide affinity chromatography using SulfoLink™ Coupling Resin (Thermo Fisher Scientific).
Specificity:	p50 Dynamitin Ab detects endogenous levels of total p50 Dynamitin.
Immunogen:	A synthesized peptide derived from human p50 Dynamitin.
Uniprot:	Q13561
Description:	dynactin 2 Modulates cytoplasmic dynein binding to an organelle, and plays a role in prometaphase chromosome alignment and spindle organization during mitosis. Involved in anchoring microtubules to centrosomes. May play a role in synapse formation during brain development. Belongs to the dynactin subunit 2 family. Subunit of dynactin, a multiprotein complex associated with dynein. Interacts with BICD2 and CEP135. Interacts with MAPRE1.
Subcellular Location:	Cytoplasm > cytoskeleton > centrosome. Membrane.
Similarity:	Belongs to the dynactin subunit 2 family.
Storage Condition and Buffer:	Rabbit IgG in phosphate buffered saline , pH 7.4, 150mM NaCl, 0.02% sodium azide and 50% glycerol.Store at -20 °C.Stable for 12 months from date of receipt.



Western blot analysis on A549 cell lysate using p50 Dynamitin Ab. The lane on the left is treated with the antigen-specific peptide.



AF0232 staining A549 by IF/ICC. The sample were fixed with PFA and permeabilized in 0.1% Triton X-100, then blocked in 10% serum for 45 minutes at 25°C. The primary Ab was diluted at 1/200 and incubated with the sample for 1 hour at 37°C. An Alexa Fluor 594 conjugated goat anti-rabbit IgG (H+L) Ab, diluted at 1/600, was used as the secondary Ab.

IMPORTANT: For western blot, incubate membrane with diluted primary Ab in 5% w/v milk , 1X TBS, 0.1% Tween@20 at 4°C with gentle shaking, overnight.

For Research Use Only. Not for use in diagnostic and therapeutic procedures. Not for resale without express authorization.