

NEDD8 Ab

Cat.#: AF0271
Size: 100ul,200ul

Concn.: 1mg/ml
Source: Rabbit

Mol.Wt.: 85kDa
Clonality: Polyclonal

Application: WB: 1:500~1:3000 IHC: 1:50~1:200, IF/ICC 1:100-1:500

Reactivity: Human, Mouse, Rat, Monkey

Purification: The antiserum was purified by peptide affinity chromatography using SulfoLink™ Coupling Resin (Thermo Fisher Scientific).

Specificity: NEDD8 Ab detects endogenous levels of total NEDD8.

Immunogen: A synthesized peptide derived from human NEDD8.

Uniprot: Q15843

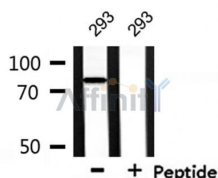
Description: NEDD8 a member of the ubiquitin family of proteins. Approximately 60% identical to ubiquitin protein.. Activated by an E1-like complex, consisting of App-b1 and Uba3 and then linked to the E2-like enzyme, Ubc12. The major target protein modified by nedd8 is cullin-4a.

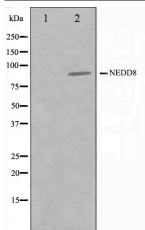
Subcellular Location: Nucleus. Mainly nuclear.

Tissue Specificity: Highly expressed in heart, skeletal muscle, spleen, thymus, prostate, testis, ovary, colon and leukocytes.

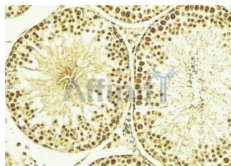
Similarity: Belongs to the ubiquitin family.

Storage Condition and Buffer: Rabbit IgG in phosphate buffered saline , pH 7.4, 150mM NaCl, 0.02% sodium azide and 50% glycerol. Store at -20 °C. Stable for 12 months from date of receipt.

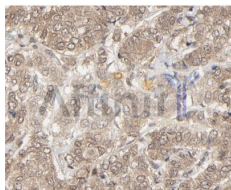




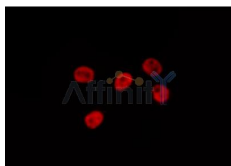
Western blot analysis on Jurkat cell lysate using NEDD8 Ab. The lane on the left is treated with the antigen-specific peptide.



AF0271 at 1/100 staining Mouse testis tissue by IHC-P. The sample was formaldehyde fixed and a heat mediated antigen retrieval step in citrate buffer was performed. The sample was then blocked and incubated with the Ab for 1.5 hours at 22°C. An HRP conjugated goat anti-rabbit Ab was used as the secondary.



IHC analysis of breast cancer tissue, using NEDD8 Ab at 1/100



AF0271 staining COS7 by IF/ICC. The sample were fixed with PFA and permeabilized in 0.1% Triton X-100, then blocked in 10% serum for 45 minutes at 25°C. The primary Ab was diluted at 1/200 and incubated with the sample for 1 hour at 37°C. An Alexa Fluor 594 conjugated goat anti-rabbit IgG (H+L) Ab, diluted at 1/600, was used as the secondary Ab.

IMPORTANT: For western blot, incubate membrane with diluted primary Ab in 5% w/v milk, 1X TBS, 0.1% Tween@20 at 4°C with gentle shaking, overnight.

For Research Use Only. Not for use in diagnostic and therapeutic procedures. Not for resale without express authorization.