

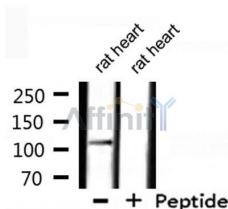
XPF Ab

Cat.#: AF0295
 Size: 100ul,200ul

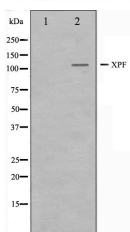
Concn.: 1mg/ml
 Source: Rabbit

Mol.Wt.: 103kDa
 Clonality: Polyclonal

- Application:** WB: 1:500~1:3000, IF/ICC 1:100-1:500
- Reactivity:** Human,Mouse,Rat
- Purification:** The antiserum was purified by peptide affinity chromatography using SulfoLink™ Coupling Resin (Thermo Fisher Scientific).
- Specificity:** XPF Ab detects endogenous levels of total XPF.
- Immunogen:** A synthesized peptide derived from human XPF.
- Uniprot:** Q92889
- Description:** ERCC4 Structure-specific DNA repair endonuclease responsible for the 5-prime incision during DNA repair. Involved in homologous recombination that assists in removing interstrand cross-link. Belongs to the XPF family. Heterodimer composed of ERCC1 and XPF/ERCC4.
- Subcellular Location:** Nucleus.
- Similarity:** Belongs to the XPF family.
- Storage Condition and Buffer:** Rabbit IgG in phosphate buffered saline , pH 7.4, 150mM NaCl, 0.02% sodium azide and 50% glycerol.Store at -20 °C.Stable for 12 months from date of receipt.



Western blot analysis of extracts from rat heart, using XPF Ab.



Western blot analysis on 293 cell lysate using XPF Ab.The lane on the left is treated with the antigen-specific peptide.



AF0295 staining 293 by IF/ICC. The sample were fixed with PFA and permeabilized in 0.1% Triton X-100, then blocked in 10% serum for 45 minutes at 25°C. The primary Ab was diluted at 1/200 and incubated with the sample for 1 hour at 37°C. An Alexa Fluor 594 conjugated goat anti-rabbit IgG (H+L) Ab, diluted at 1/600, was used as the secondary Ab.

IMPORTANT: For western blot, incubate membrane with diluted primary Ab in 5% w/v milk , 1X TBS, 0.1% Tween@20 at 4°C with gentle shaking, overnight.

For Research Use Only. Not for use in diagnostic and therapeutic procedures. Not for resale without express authorization.