

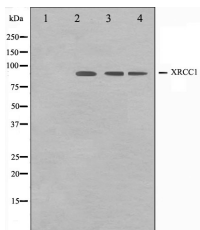
XRCC1 Ab

Cat.#: AF0296
Size: 100ul,200ul

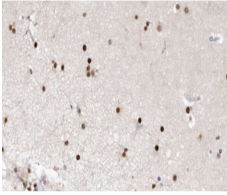
Concn.: 1mg/ml
Source: Rabbit

Mol.Wt.: 90kDa
Clonality: Polyclonal

Application:	WB: 1:500~1:3000 IHC: 1:50~1:200
Reactivity:	Human,Mouse,Rat
Purification:	The antiserum was purified by peptide affinity chromatography using SulfoLink™ Coupling Resin (Thermo Fisher Scientific).
Specificity:	XRCC1 Ab detects endogenous levels of total XRCC1.
Immunogen:	A synthesized peptide derived from human XRCC1.
Uniprot:	P18887
Description:	XRCC1 Corrects defective DNA strand-break repair and sister chromatid exchange following treatment with ionizing radiation and alkylating agents. Homodimer. Interacts with polynucleotide kinase (PNK), DNA polymerase-beta (POLB) and DNA ligase III (LIG3).
Subcellular Location:	Nucleus. Accumulates at sites of DNA damage.
Tissue Specificity:	Expressed in fibroblasts, retinal pigmented epithelial cells and lymphoblastoid cells (at protein level).
Storage Condition and Buffer:	Rabbit IgG in phosphate buffered saline , pH 7.4, 150mM NaCl, 0.02% sodium azide and 50% glycerol.Store at -20 °C.Stable for 12 months from date of receipt.



Western blot analysis on Jurkat, COS7 and HuvEc cell lysate using XRCC1 Ab. The lane on the left is treated with the antigen-specific peptide.



AF0296 at 1/100 staining human brain tissue sections by IHC-P. The tissue was formaldehyde fixed and a heat mediated antigen retrieval step in citrate buffer was performed. The tissue was then blocked and incubated with the Ab for 1.5 hours at 22°C. An HRP conjugated goat anti-rabbit Ab was used as the secondary.

IMPORTANT: For western blot, incubate membrane with diluted primary Ab in 5% w/v milk , 1X TBS, 0.1% Tween@20 at 4°C with gentle shaking, overnight.

For Research Use Only. Not for use in diagnostic and therapeutic procedures. Not for resale without express authorization.