

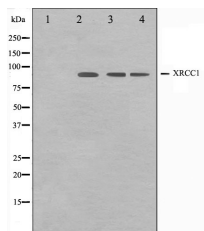
## XRCC1 Ab

Cat.#: AF0296  
Size: 100ul,200ul

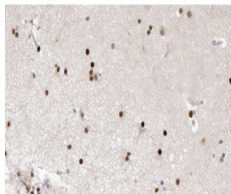
Concn.: 1mg/ml  
Source: Rabbit

Mol.Wt.: 90kDa  
Clonality: Polyclonal

Application:	WB: 1:500~1:3000 IHC: 1:50~1:200
Reactivity:	Human,Mouse,Rat
Purification:	The antiserum was purified by peptide affinity chromatography using SulfoLink™ Coupling Resin (Thermo Fisher Scientific).
Specificity:	XRCC1 Ab detects endogenous levels of total XRCC1.
Immunogen:	A synthesized peptide derived from human XRCC1.
Uniprot:	P18887
Description:	XRCC1 Corrects defective DNA strand-break repair and sister chromatid exchange following treatment with ionizing radiation and alkylating agents. Homodimer. Interacts with polynucleotide kinase (PNK), DNA polymerase-beta (POLB) and DNA ligase III (LIG3).
Subcellular Location:	Nucleus. Accumulates at sites of DNA damage.
Tissue Specificity:	Expressed in fibroblasts, retinal pigmented epithelial cells and lymphoblastoid cells (at protein level).
Storage Condition and Buffer:	Rabbit IgG in phosphate buffered saline , pH 7.4, 150mM NaCl, 0.02% sodium azide and 50% glycerol.Store at -20 °C.Stable for 12 months from date of receipt.



Western blot analysis on Jurkat,COS7 and HuvEc cell lysate using XRCC1 Ab.The lane on the left is treated with the antigen-specific peptide.



AF0296 at 1/100 staining human brain tissue sections by IHC-P. The tissue was formaldehyde fixed and a heat mediated antigen retrieval step in citrate buffer was performed. The tissue was then blocked and incubated with the Ab for 1.5 hours at 22°C. An HRP conjugated goat anti-rabbit Ab was used as the secondary.

**IMPORTANT:** For western blot, incubate membrane with diluted primary Ab in 5% w/v milk , 1X TBS, 0.1% Tween@20 at 4°C with gentle shaking, overnight.

For Research Use Only. Not for use in diagnostic and therapeutic procedures. Not for resale without express authorization.