

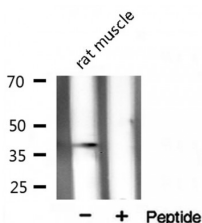
XRCC3 Ab

Cat.#: AF0298
Size: 100ul,200ul

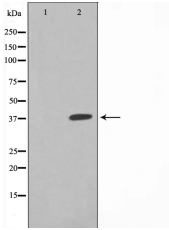
Concn.: 1mg/ml
Source: Rabbit

Mol.Wt.: 38kDa
Clonality: Polyclonal

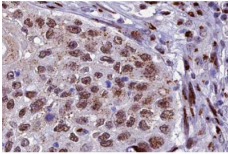
Application:	WB: 1:500~1:3000 IHC: 1:50~1:200, IF/ICC 1:100-1:500
Reactivity:	Human
Purification:	The antiserum was purified by peptide affinity chromatography using SulfoLink™ Coupling Resin (Thermo Fisher Scientific).
Specificity:	XRCC3 Ab detects endogenous levels of total XRCC3.
Immunogen:	A synthesized peptide derived from human XRCC3.
Uniprot:	O43542
Description:	XRCC3 Involved in the homologous recombination repair (HRR) pathway of double-stranded DNA, thought to repair chromosomal fragmentation, translocations and deletions. Belongs to the recA family. RAD51 subfamily. Interacts with RAD51C and RAD51.
Subcellular Location:	Nucleus. Cytoplasm. Cytoplasm > perinuclear region. Mitochondrion. Accumulates in discrete nuclear foci prior to DNA damage, and these foci persist throughout the time course of DNA repair.
Tissue Specificity:	Stress-induced increase in the mitochondrial levels is seen.
Similarity:	Belongs to the RecA family. RAD51 subfamily.
Storage Condition and Buffer:	Rabbit IgG in phosphate buffered saline , pH 7.4, 150mM NaCl, 0.02% sodium azide and 50% glycerol.Store at -20 °C.Stable for 12 months from date of receipt.



Western blot analysis on rat muscle tissue lysate using XRCC3 Ab



Western blot analysis on HepG2 cell lysate using XRCC3 Ab. The lane on the left is treated with the antigen-specific peptide.



AF0298 at 1/100 staining human lung carcinoma tissue sections by IHC-P. The tissue was formaldehyde fixed and a heat mediated antigen retrieval step in citrate buffer was performed. The tissue was then blocked and incubated with the Ab for 1.5 hours at 22°C. An HRP conjugated goat anti-rabbit Ab was used as the secondary.



AF0298 staining HepG2 by IF/ICC. The sample were fixed with PFA and permeabilized in 0.1% Triton X-100, then blocked in 10% serum for 45 minutes at 25°C. The primary Ab was diluted at 1/200 and incubated with the sample for 1 hour at 37°C. An Alexa Fluor 594 conjugated goat anti-rabbit IgG (H+L) Ab, diluted at 1/600, was used as the secondary Ab.

IMPORTANT: For western blot, incubate membrane with diluted primary Ab in 5% w/v milk, 1X TBS, 0.1% Tween@20 at 4°C with gentle shaking, overnight.

For Research Use Only. Not for use in diagnostic and therapeutic procedures. Not for resale without express authorization.