

XRCC4 Ab

Cat.#: AF0299
Size: 100ul,200ul

Concn.: 1mg/ml
Source: Rabbit

Mol.Wt.: 40kDa
Clonality: Polyclonal

Application: WB: 1:500~1:3000

Reactivity: Human

Purification: The antiserum was purified by peptide affinity chromatography using SulfoLink™ Coupling Resin (Thermo Fisher Scientific).

Specificity: XRCC4 Ab detects endogenous levels of total XRCC4.

Immunogen: A synthesized peptide derived from human XRCC4.

Uniprot: Q13426

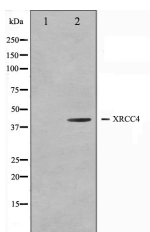
Description: XRCC4 Involved in DNA non-homologous end joining (NHEJ) required for double-strand break repair and V(D)J recombination. Binds to DNA and to DNA ligase IV (LIG4). The LIG4-XRCC4 complex is responsible for the NHEJ ligation step, and XRCC4 enhances the joining activity of LIG4. Binding of the LIG4-XRCC4 complex to DNA ends is dependent on the assembly of the DNA-dependent protein kinase complex DNA-PK to these DNA ends. Belongs to the XRCC4 family.

Subcellular Location: Nucleus.

Tissue Specificity: Widely expressed.

Similarity: Belongs to the XRCC4 family.

Storage Condition and Buffer: Rabbit IgG in phosphate buffered saline , pH 7.4, 150mM NaCl, 0.02% sodium azide and 50% glycerol.Store at -20 °C.Stable for 12 months from date of receipt.



Western blot analysis on COLO205 cell lysate using XRCC4 Ab.The lane on the left is treated with the antigen-specific peptide.

in 5% w/v milk , 1X TBS, 0.1% Tween@20 at 4°C with gentle shaking,
overnight.

For Research Use Only. Not for use in diagnostic and therapeutic
procedures. Not for resale without express authorization.