

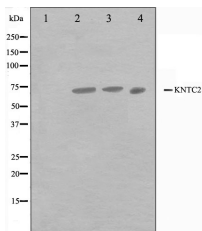
HEC1 Ab

Cat.#: AF0312
Size: 100ul,200ul

Concn.: 1mg/ml
Source: Rabbit

Mol.Wt.: 73kDa
Clonality: Polyclonal

Application:	WB: 1:500~1:3000 IF/ICC: 1:100~1:500
Reactivity:	Human,Mouse
Purification:	The antiserum was purified by peptide affinity chromatography using SulfoLink™ Coupling Resin (Thermo Fisher Scientific).
Specificity:	HEC1 Ab detects endogenous levels of total HEC1.
Immunogen:	A synthesized peptide derived from human HEC1.
Uniprot:	O14777
Description:	HEC1 plays an essential role in chromosome segregation by interacting through its coiled-coil domains with several proteins that modulate the G2/M phase. Phosphorylation by Nek2 is essential for faithful chromosome segregation. Required for the recruitment of Mps1 kinase and Mad1/Mad2 complexes to kinetochores.
Subcellular Location:	Nucleus. Chromosome > centromere > kinetochore. Localizes to kinetochores from late prophase to anaphase. Localizes specifically to the outer plate of the kinetochore.
Tissue Specificity:	Expression peaks in mitosis.
Similarity:	Belongs to the NDC80/HEC1 family.
Storage Condition and Buffer:	PBS, pH 7.4,50% glycerol.



Western blot analysis on Jurkat,A549 and HuvEc cell lysate using HEC1 Ab.The lane on the left is treated with the antigen-specific peptide.



AF0312 staining HeLa by IF/ICC. The sample were fixed with PFA and permeabilized in 0.1% Triton X-100,then blocked in 10% serum for 45 minutes at 25°C. The primary Ab was diluted at 1/200 and incubated with the sample for 1 hour at 37°C. An Alexa Fluor 594 conjugated goat anti-rabbit IgG (H+L) Ab, diluted at 1/600, was used as the secondary Ab.



AF0312 staining HeLa cells by IF/ICC. The sample were fixed with PFA and permeabilized in 0.1% Triton X-100,then blocked in 10% serum for 45 minutes at 25°C. The primary Ab was diluted at 1/200 and incubated with the sample for 1 hour at 37°C. An Alexa Fluor 594 conjugated goat anti-rabbit IgG (H+L) Ab(Cat.# S0006), diluted at 1/600, was used as secondary Ab.

IMPORTANT: For western blot, incubate membrane with diluted primary Ab in 5% w/v milk , 1X TBS, 0.1% Tween@20 at 4°C with gentle shaking, overnight.

For Research Use Only. Not for use in diagnostic and therapeutic procedures. Not for resale without express authorization.