

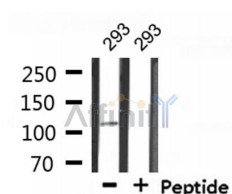
MED24 Ab

Cat.#: AF0346
Size: 100ul,200ul

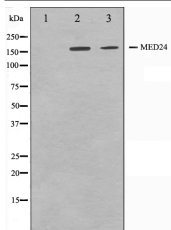
Concn.: 1mg/ml
Source: Rabbit

Mol.Wt.: 110kDa
Clonality: Polyclonal

Application:	WB: 1:500~1:3000 IF/ICC: 1:100~1:500
Reactivity:	Human,Mouse,Rat
Purification:	The antiserum was purified by peptide affinity chromatography using SulfoLink™ Coupling Resin (Thermo Fisher Scientific).
Specificity:	MED24 Ab detects endogenous levels of total MED24.
Immunogen:	A synthesized peptide derived from human MED24.
Uniprot:	O75448
Description:	Trap100 a transcriptional coactivator protein of the thyroid hormone receptor-associated protein (TRAP) family. Forms a complex with the thyroid hormone receptor (TR) and markedly enhance TR-mediated transcription in vitro. Interacts and co-precipitates with Trap220 but does not directly bind nuclear hormone receptors.
Subcellular Location:	Nucleus.
Tissue Specificity:	Ubiquitous. Abundant in skeletal muscle, heart and placenta.
Similarity:	Belongs to the Mediator complex subunit 24 family.
Storage Condition and Buffer:	Rabbit IgG in phosphate buffered saline , pH 7.4, 150mM NaCl, 0.02% sodium azide and 50% glycerol.Store at -20 °C.Stable for 12 months from date of receipt.



Western blot analysis of extracts from 293, using MED24 Ab.



Western blot analysis on A549 and HuvEc cell lysate using MED24 Ab, The lane on the left is treated with the antigen-specific peptide.



AF0346 staining 293 by IF/ICC. The sample were fixed with PFA and permeabilized in 0.1% Triton X-100, then blocked in 10% serum for 45 minutes at 25°C. The primary Ab was diluted at 1/200 and incubated with the sample for 1 hour at 37°C. An Alexa Fluor 594 conjugated goat anti-rabbit IgG (H+L) Ab, diluted at 1/600, was used as the secondary Ab.



AF0346 staining 293 cells by IF/ICC. The sample were fixed with PFA and permeabilized in 0.1% Triton X-100, then blocked in 10% serum for 45 minutes at 25°C. The primary Ab was diluted at 1/200 and incubated with the sample for 1 hour at 37°C. An Alexa Fluor 594 conjugated goat anti-rabbit IgG (H+L) Ab (Cat.# S0006), diluted at 1/600, was used as secondary Ab.

IMPORTANT: For western blot, incubate membrane with diluted primary Ab in 5% w/v milk, 1X TBS, 0.1% Tween@20 at 4°C with gentle shaking, overnight.

For Research Use Only. Not for use in diagnostic and therapeutic procedures. Not for resale without express authorization.