

## TRIM16 Ab

Cat.#: AF0352  
Size: 100ul,200ul

Concn.: 1mg/ml  
Source: Rabbit

Mol.Wt.: 63kDa  
Clonality: Polyclonal

Application: IHC 1:50-1:200 WB 1:1000

Reactivity: Human,Mouse

Purification: The antiserum was purified by peptide affinity chromatography using SulfoLink™ Coupling Resin (Thermo Fisher Scientific).

Specificity: TRIM16 Ab detects endogenous levels of TRIM16.

Immunogen: A synthesized peptide derived from human TRIM16.

Uniprot: O95361

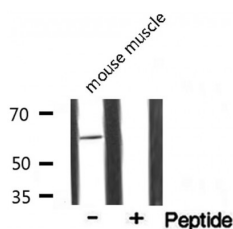
Description: May play a role in the regulation of keratinocyte differentiation

Subcellular Location: Cytoplasm.

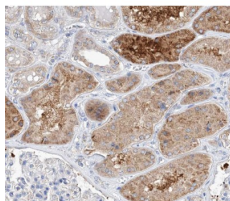
Tissue Specificity: Highest levels found in testis, ovary, small intestine, colon, placenta, heart, skeletal muscle and mammary gland. More highly expressed in the fetus than in the corresponding adult tissues. Expressed in basal keratinocytes.

Similarity: Belongs to the TRIM/RBCC family.

Storage Condition and Buffer: Rabbit IgG in phosphate buffered saline , pH 7.4, 150mM NaCl,Store at -20 °C.Stable for 12 months from date of receipt.



Western blot analysis of TRIM16 Ab expression in Mouse muscle tissue lysates. The lane on the right is treated with the antigen-specific peptide.



AF0352 at 1/100 staining human kidney tissue sections by IHC-P. The tissue was formaldehyde fixed and a heat mediated antigen retrieval step in citrate buffer was performed. The tissue was then blocked and incubated with the Ab for 1.5 hours at 22°C. An HRP conjugated goat anti-rabbit Ab was used as the secondary.

**IMPORTANT:** For western blot, incubate membrane with diluted primary Ab in 5% w/v milk , 1X TBS, 0.1% Tween@20 at 4°C with gentle shaking, overnight.

For Research Use Only. Not for use in diagnostic and therapeutic procedures. Not for resale without express authorization.