

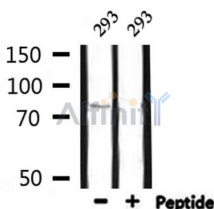
BARD1 Ab

Cat.#: AF0378
 Size: 100ul,200ul

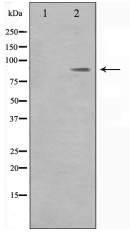
Concn.: 1mg/ml
 Source: Rabbit

Mol.Wt.: 86kDa
 Clonality: Polyclonal

Application:	WB: 1:500~1:3000
Reactivity:	Human
Purification:	The antiserum was purified by peptide affinity chromatography using SulfoLink™ Coupling Resin (Thermo Fisher Scientific).
Specificity:	BARD1 Ab detects endogenous levels of total BARD1.
Immunogen:	A synthesized peptide derived from human BARD1.
Uniprot:	Q14565
Description:	BARD1 the BRCA1-BARD1 heterodimer coordinates a diverse range of cellular pathways such as DNA damage repair, ubiquitination and transcriptional regulation to maintain genomic stability. Plays a central role in the control of the cell cycle in response to DNA damage. Acts by mediating ubiquitin E3 ligase activity that is required for its tumor suppressor function. Also forms a heterodimer with CSTF1/CSTF-50 to modulate mRNA processing and RNAP II stability by inhibiting pre-mRNA 3' cleavage. Colocalizes with BRCA1 into discrete subnuclear foci during S phase. Can translocate to the cytoplasm.
Subcellular Location:	Nucleus. Chromosome.
Similarity:	Belongs to the RecA family. DMC1 subfamily.
Storage Condition and Buffer:	Rabbit IgG in phosphate buffered saline , pH 7.4, 150mM NaCl, 0.02% sodium azide and 50% glycerol.Store at -20 °C.Stable for 12 months from date of receipt.



Western blot analysis of extracts from 293, using BARD1 Ab.



Western blot analysis on HeLa cell lysate using BARD1 Ab, The lane on the left is treated with the antigen-specific peptide.

IMPORTANT: For western blot, incubate membrane with diluted primary Ab in 5% w/v milk , 1X TBS, 0.1% Tween@20 at 4°C with gentle shaking, overnight.

For Research Use Only. Not for use in diagnostic and therapeutic procedures. Not for resale without express authorization.