

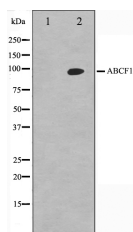
ABCF1 Ab

Cat.#: AF0385
Size: 100ul,200ul

Concn.: 1mg/ml
Source: Rabbit

Mol.Wt.: 95kDa
Clonality: Polyclonal

Application:	WB: 1:500~1:3000, IF/ICC 1:100-1:500
Reactivity:	Human,Mouse,Rat
Purification:	The antiserum was purified by peptide affinity chromatography using SulfoLink™ Coupling Resin (Thermo Fisher Scientific).
Specificity:	ABCF1 Ab detects endogenous levels of total ABCF1.
Immunogen:	A synthesized peptide derived from human ABCF1.
Uniprot:	Q8NE71
Description:	ABCF1 May function in mRNA translation. Belongs to the ABC transporter superfamily. ABCF family. EF3 subfamily. Induced by TNF (in cultured synoviocytes). Interacts with eukaryotic initiation factor 2 (eIF2). Associates with the ribosomes. 2 isoforms of the human protein are produced by alternative splicing. Note: This description may include information from UniProtKB.
Subcellular Location:	Cytoplasm. Nucleus, nucleoplasm. Nucleus envelope.
Tissue Specificity:	Ubiquitous.
Similarity:	Belongs to the ABC transporter superfamily. ABCF family. EF3 subfamily.
Storage Condition and Buffer:	Rabbit IgG in phosphate buffered saline , pH 7.4, 150mM NaCl, 0.02% sodium azide and 50% glycerol.Store at -20 °C.Stable for 12 months from date of receipt.



Western blot analysis on HeLa cell lysate using ABCF1 Ab, The lane on the left is treated with the antigen-specific peptide.



AF0385 staining HeLa by IF/ICC. The sample were fixed with PFA and permeabilized in 0.1% Triton X-100, then blocked in 10% serum for 45 minutes at 25°C. The primary Ab was diluted at 1/200 and incubated with the sample for 1 hour at 37°C. An Alexa Fluor 594 conjugated goat anti-rabbit IgG (H+L) Ab, diluted at 1/600, was used as the secondary Ab.

IMPORTANT: For western blot, incubate membrane with diluted primary Ab in 5% w/v milk, 1X TBS, 0.1% Tween@20 at 4°C with gentle shaking, overnight.

For Research Use Only. Not for use in diagnostic and therapeutic procedures. Not for resale without express authorization.