

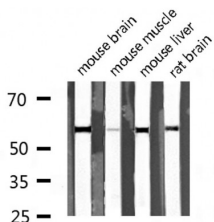
## DUS2L Ab

Cat.#: AF0430  
Size: 100ul,200ul

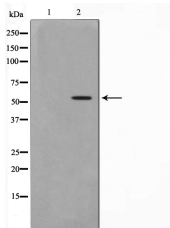
Concn.: 1mg/ml  
Source: Rabbit

Mol.Wt.: 55kDa  
Clonality: Polyclonal

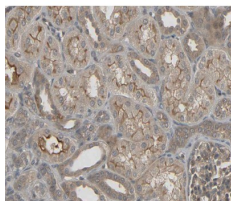
Application:	WB 1:500-1:2000 IHC 1:50-1:200, IF/ICC 1:100-1:500
Reactivity:	Human,Mouse,Rat
Purification:	The antiserum was purified by peptide affinity chromatography using SulfoLink™ Coupling Resin (Thermo Fisher Scientific).
Specificity:	DUS2L Ab detects endogenous levels of DUS2L.
Immunogen:	A synthesized peptide derived from human DUS2L.
Uniprot:	Q9NX74
Description:	DUS2L Dihydrouridine synthase. Catalyzes the synthesis of dihydrouridine, a modified base found in the D-loop of most tRNAs. Belongs to the dus family. Dus2 subfamily.
Subcellular Location:	Cytoplasmic and Endoplasmic reticulum. Note=Mainly at the endoplasmic reticulum.
Tissue Specificity:	Weak expression in heart, placenta and skeletal muscle. Up-regulated in most lung cancer cells (at protein level).
Similarity:	Belongs to the Dus family. Dus2 subfamily.
Storage Condition and Buffer:	Rabbit IgG in phosphate buffered saline , pH 7.4, 150mM NaCl, 0.02% sodium azide and 50% glycerol.Store at -20 °C.Stable for 12 months from date of receipt.



Western blot analysis of extracts of various tissue sample,using DUS2L Ab .



Western blot analysis on RAW264.7 cell lysate using DUS2L Ab. The lane on the left is treated with the antigen-specific peptide.



AF0430 at 1/100 staining human kidney tissue sections by IHC-P. The tissue was formaldehyde fixed and a heat mediated antigen retrieval step in citrate buffer was performed. The tissue was then blocked and incubated with the Ab for 1.5 hours at 22°C. An HRP conjugated goat anti-rabbit Ab was used as the secondary.



AF0430 staining RAW264.7 by IF/ICC. The sample were fixed with PFA and permeabilized in 0.1% Triton X-100, then blocked in 10% serum for 45 minutes at 25°C. The primary Ab was diluted at 1/200 and incubated with the sample for 1 hour at 37°C. An Alexa Fluor 594 conjugated goat anti-rabbit IgG (H+L) Ab, diluted at 1/600, was used as the secondary Ab.

**IMPORTANT:** For western blot, incubate membrane with diluted primary Ab in 5% w/v milk, 1X TBS, 0.1% Tween@20 at 4°C with gentle shaking, overnight.

For Research Use Only. Not for use in diagnostic and therapeutic procedures. Not for resale without express authorization.