

ETV4 Ab

Cat.#: AF0435
Size: 100ul,200ul

Concn.: 1mg/ml
Source: Rabbit

Mol.Wt.: 53kDa
Clonality: Polyclonal

Application: IHC 1:50-1:200 WB 1:1000

Reactivity: Human,Mouse

Purification: The antiserum was purified by peptide affinity chromatography using SulfoLink™ Coupling Resin (Thermo Fisher Scientific).

Specificity: ETV4 Ab detects endogenous levels of ETV4.

Immunogen: A synthesized peptide derived from human ETV4.

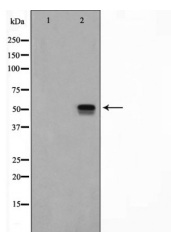
Uniprot: P43268

Description: ETV4 Transcriptional activator that binds to the enhancer of the adenovirus E1A gene; the core-binding sequence is 5'[AC]GGA[AT]GT-3'.

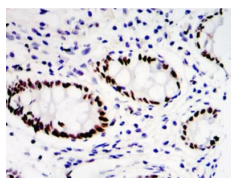
Subcellular Location: Nucleus.

Similarity: Belongs to the ETS family.

Storage Condition and Buffer: Rabbit IgG in phosphate buffered saline , pH 7.4, 150mM NaCl, 0.02% sodium azide and 50% glycerol.Store at -20 °C.Stable for 12 months from date of receipt.



Western blot analysis of ETV4 Ab expression in K562 cells lysates. The lane on the left is treated with the antigen-specific peptide.



Immunohistochemical analysis of paraffin-embedded colon cancer tissues

IMPORTANT: For western blot, incubate membrane with diluted primary Ab in 5% w/v milk , 1X TBS, 0.1% Tween@20 at 4°C with gentle shaking, overnight.

For Research Use Only. Not for use in diagnostic and therapeutic procedures. Not for resale without express authorization.